

[www.claw.gov.uk](http://www.claw.gov.uk)



## Annual Report

# 2010

## Adroddiad Blynyddol





Annual Meeting of Elected Representatives

hosted by the Consortium  
at the Imperial Hotel, Llandudno  
Conwy County Borough Council

Friday 12th November 2010



Cyfarfod Blynyddol Cynrychiolwyr Etholedig

wedi'i gynnal gan y Consortiwm  
yng Ngwesty'r Imperial, Llandudno  
Cyngor Bwrdeistref Sirol Conwy

Dydd Gwener 12 Tachwedd 2010

# CONSORTIUM LOCAL AUTHORITIES WALES CONSORTIWM AWDURDODAU LLEOL CYMRU

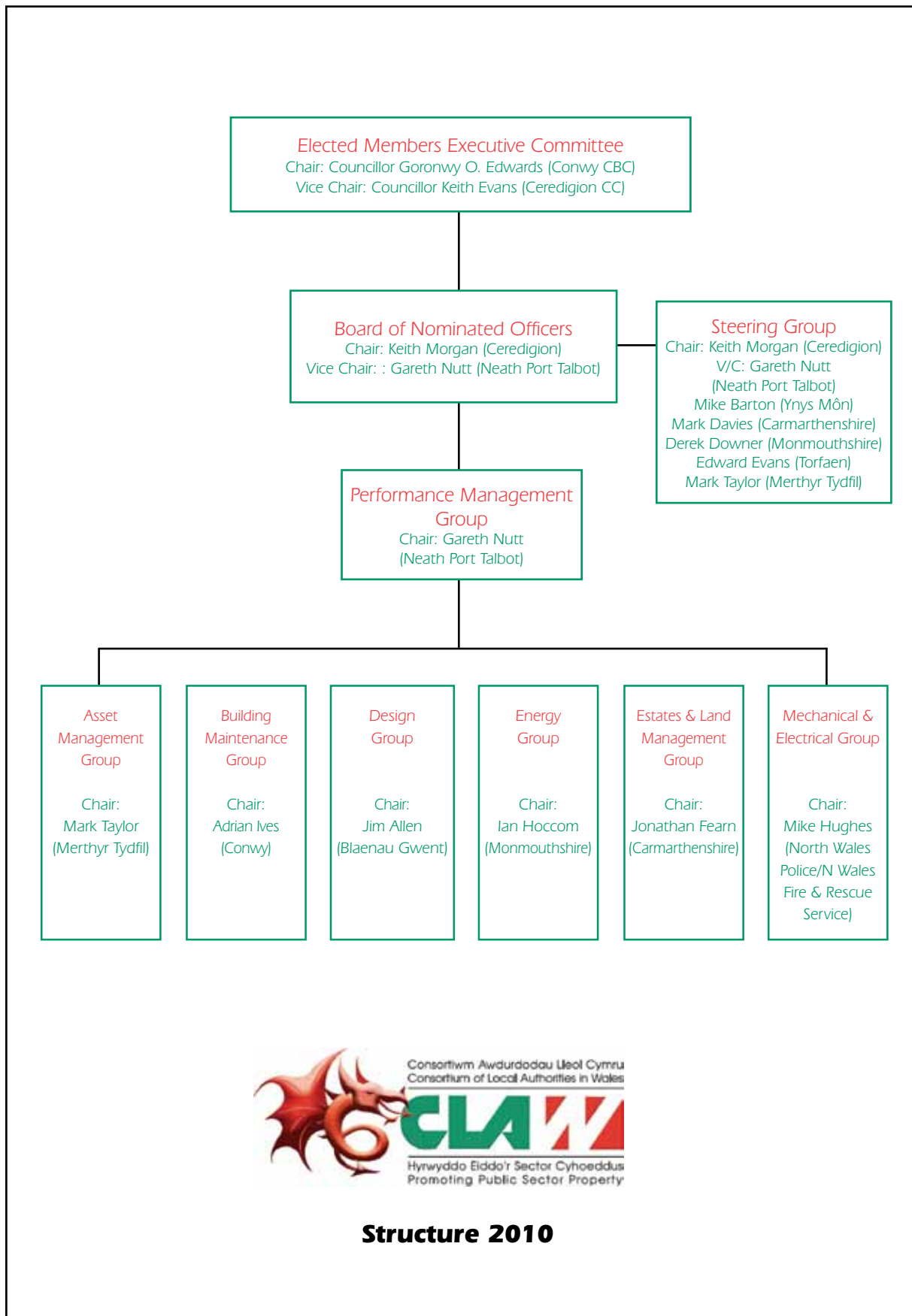
## Contents/Cynnwys

List of Consortium Membership	1	Rhestr o Aelodau'r Consortiwm
CLAW - Structure of Organisation	2	CLAW – Strwythur y Sefydliad
CLAW Board Member Representatives	4	Cynrychiolwyr Aelodau Bwrdd CLAW
Message from the Chairman, Councillor Goronwy Edwards	5	Neges gan y Cadeirydd, y Cynghorydd Goronwy Edwards
Report by the Chairman of the Board of Nominated Officers	6	Adroddiad gan Gadeirydd Bwrdd y Swyddogion Enwebedig
Report by the Chairman of the Performance Management Group	10	Adroddiad gan Gadeirydd y Grŵp Rheoli Perfformiad
Report by the Chairman of the Building Maintenance Group	11	Adroddiad gan Gadeirydd y Grŵp Cynnal Adeiladau
Report by the Chairman of Design Group	12	Adroddiad gan Gadeirydd y Grŵp Dylunio
Report by the Chairman of the Energy Group	13	Adroddiad gan Gadeirydd y Grŵp Ynni
Report by the Chairman of the Asset Management Group	15	Adroddiad gan Gadeirydd y Grŵp Rheoli Asedau
Report by the Chairman of the Estates and Land Management Group	16	Adroddiad gan Gadeirydd y Grŵp Stadau a Rheoli Tir
Report by the Chairman of the Mechanical and Electrical Group	18	Adroddiad gan Gadeirydd y Grŵp Mecanyddol a Thrydanol
Constructing Excellence in Wales	19	Adeiladu Arbenigrwydd yng Nghymru
Value Wales	20	Gwerth Cymru
Welsh Local Government Association	21	Cymdeithas Llywodraeth Leol Cymru
Building of the Year Award 2010/ Sustainability Award 2010	23	Gwobr Adeilad y Flwyddyn 2010/ Gwobr Gynaliadwyedd 2010
Past Winners	25	Enillwyr y Gorffennol
Building of the Year Award Winner	26	Enillydd Gwobr Adeilad y Flwyddyn
Sustainability Award Winner	28	Enillydd y Wobr Gynaliadwyedd
Building of the Year Award Commendations	30	Gwobr Adeilad y Flwyddyn – adeiladau a gafodd ganmoliaeth
<b><i>Council Reports / Adroddiadau gan Gyngorau</i></b>		
Blaenau Gwent County Borough Council	32	Cyngor Bwrdeistref Sirol Blaenau Gwent
Bridgend County Borough Council	34	Cyngor Bwrdeistref Sirol Pen-y-bont ar Ogwr
Caerphilly County Borough Council	36	Cyngor Bwrdeistref Sirol Caerffili
Cardiff County Council	37	Cyngor Sir Caerdydd
Ceredigion County Council	41	Cyngor Sir Ceredigion
City and County of Swansea	43	Dinas a Sir Abertawe
Denbighshire County Council	45	Cyngor Sir Ddinbych
Flintshire County Council	47	Cyngor Sir y Fflint
Monmouthshire County Council	49	Cyngor Sir Fynwy
Neath Port Talbot County Borough Council	50	Cyngor Bwrdeistref Sirol Castell-nedd Port Talbot
Newport City Council	52	Cyngor Dinas Casnewydd
Pembrokeshire County Council	54	Cyngor Sir Benfro
Powys County Council	55	Cyngor Sir Powys
Rhondda Cynon Taf County Borough Council	58	Cyngor Bwrdeistref Sirol Rhondda Cynon Taf
Vale of Glamorgan Council	60	Cyngor Bro Morgannwg
Wrexham County Borough Council	61	Cyngor Bwrdeistref Sirol Wrecsam

Consortium Membership  
Rhestr o Aelodau'r Consortiwm

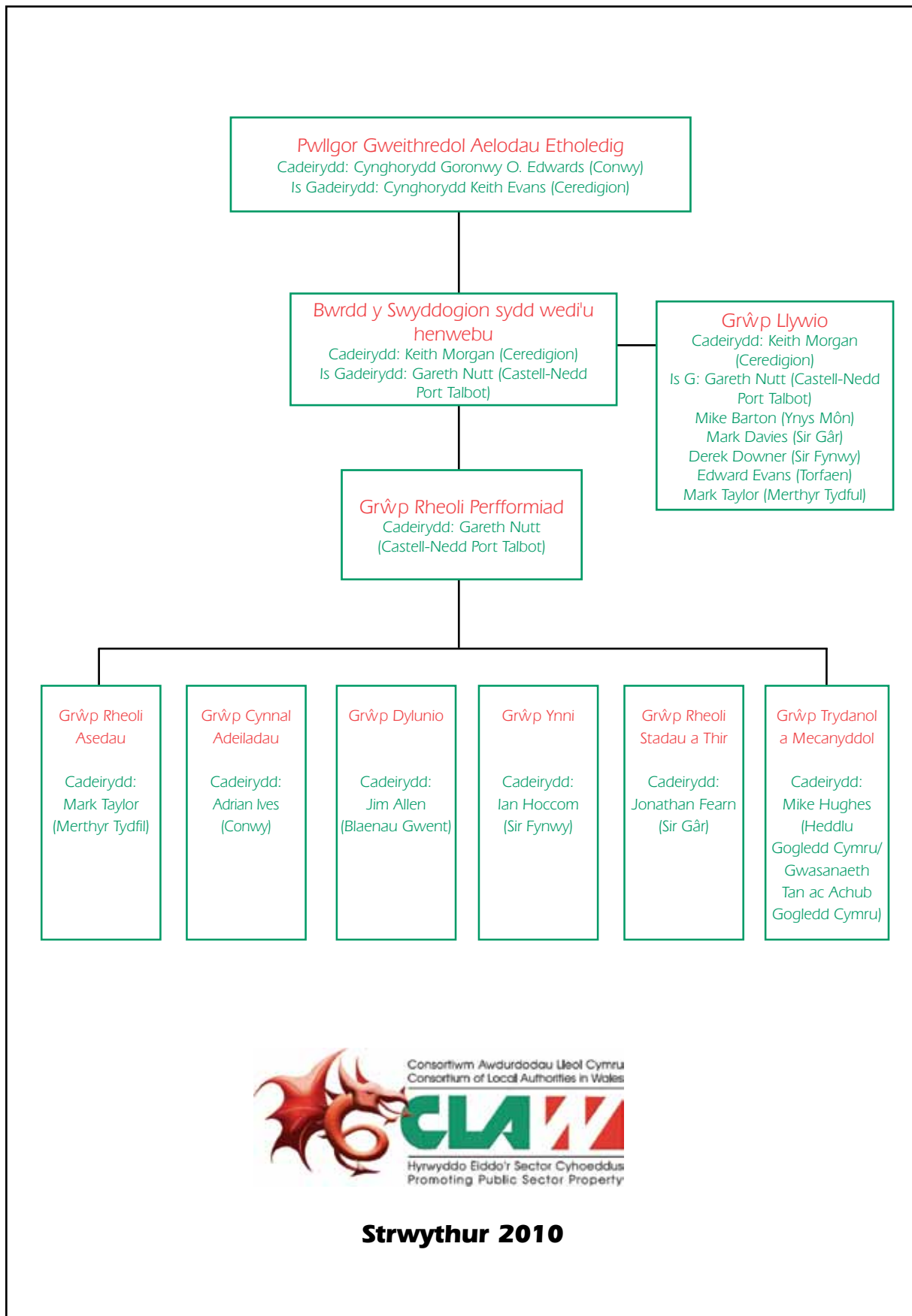
Blaenau Gwent County Borough Council	Cyngor Bwrdeistref Sirol Blaenau Gwent
Bridgend County Borough Council	Cyngor Bwrdeistref Sirol Pen-y-bont-ar Ogwr
Caerphilly County Borough Council	Cyngor Bwrdeistref Sirol Caerffili
Carmarthenshire County Council	Cyngor Sir Gâr
Ceredigion County Council	Cyngor Sir Ceredigion
Cardiff County Council	Cyngor Sir Caerdydd
City and County of Swansea	Dinas a Sir Abertawe
Conwy County Borough Council	Cyngor Bwrdeistref Sirol Conwy
Denbighshire County Council	Cyngor Sir Ddinbych
Flintshire County Council	Cyngor Sir y Fflint
Gwynedd Council	Cyngor Gwynedd
Isle of Anglesey County Council	Cyngor Sir Ynys Môn
Merthyr Tydfil County Borough Council	Cyngor Bwrdeistref Sirol Merthyr Tudful
Mid & West Wales Fire and Rescue Service	Gwasanaeth Tân ac Achub Canolbarth Gorllewin Cymru
Monmouthshire County Council	Cyngor Sir Fynwy
Neath Port Talbot County Borough Council	Cyngor Bwrdeistref Sirol Castell-Nedd Port Talbot
Newport City Council	Cyngor Dinas Casnewydd
North Wales Police	Heddlu Gogledd Cymru
Pembrokeshire County Council	Cyngor Sir Penfro
Powys County Council	Cyngor Sir Powys
Rhondda Cynon Taff County Borough Council	Cyngor Bwrdeistref Sirol Rhondda Cynon Taf
South Wales Police	Heddlu De Cymru
Torfaen County Borough Council	Cyngor Bwrdeistref Sirol Torfaen
Vale of Glamorgan Council	Cyngor Bro Morgannwg
Wrexham County Borough Council	Cyngor Bwrdeistref Sirol Wrecsam

Structure of Organisation



**Structure 2010**

Strwythur y Sefydliad



## CLAW Board Member Representatives

<b>Council</b>	<b>Member</b>
Blaenau Gwent County Borough Council	<i>Councillor Keith Barnes</i>
Bridgend County Borough Council	<i>Councillor Huw David</i>
Caerphilly County Borough Council	<i>Councillor Lyn Ackerman</i>
	<i>Councillor Colin Mann</i>
Cardiff County Council	<i>Councillor Mark Stephens</i>
Carmarthenshire County Council	<i>Councillor Philip Hughes</i>
	<i>Councillor Ivor J Jackson</i>
Ceredigion County Council (Cygnor Sir Ceredigion)	<i>Councillor Keith Evans (Vice Chair)</i>
City & County of Swansea	<i>Councillor Peter May</i>
	<i>Councillor Stuart Rice</i>
Conwy County Borough Council	<i>Councillor Goronwy O Edwards (Chair)</i>
	<i>Councillor Joan Vaughan</i>
Denbighshire County Council	<i>Councillor Paul Marfleet</i>
Flintshire County Council	<i>Councillor Arnold Woolley</i>
Gwynedd County Council	<i>Councillor Alwyn Gruffydd</i>
Merthyr Tydfil County Borough Council	<i>Councillor Brendan Toomey</i>
Monmouthshire County Council	<i>Councillor Robert J W Greenland</i>
Neath, Port Talbot County Borough Council	<i>Councillor Mrs Olga Jones</i>
	<i>Councillor David Lewis</i>
Newport City Council	<i>Councillor Peter H C Davies</i>
Pembrokeshire County Council	<i>Councillor Jamie L Adams</i>
Powys County Council	<i>Councillor Stephen Hayes</i>
Rhondda Cynon Taff County Borough Council	<i>Councillor Annette Davies</i>
Torfaen County Borough Council	<i>Councillor John Cunningham</i>
Vale of Glamorgan Council	<i>Councillor Paul Church</i>
	<i>Councillor Mrs M R Wilkinson</i>
Wrexham County Borough Council	<i>Councillor Ron Davies</i>
Ynys Môn County Council	<i>Councillor William I Hughes</i>
	<i>Councillor Hywel Eifion Jones</i>

## Message from the Chairman Neges oddi wrth y Cadeirydd

At the end of my second year in office as Chairman, it gives me great pleasure to write the foreword to the CLAW Annual Report 2010. This year again, the Annual Report shows how much excellent work has been carried out and provides a wealth of information on interesting projects that have been delivered by CLAW member authorities across Wales.

We are now living in difficult economic times with even greater financial pressures being placed on public services.

It is extremely important therefore for authorities to collaborate and work together, and with other organisations, wherever possible in order to reduce costs and to deliver services more economically for our ratepayers and customers. CLAW has always recognised this need and continues to promote best practice in Local Authority Property Management to the benefit of its membership.

An example of collaboration and working together includes the preparation of the Low Carbon Design Guide which was developed by the British Research Establishment, Carbon Trust Wales and CLAW and which was officially launched at the CLAW Spring Meeting of Elected Members in Llanelli in May of this year.

CLAW is working closely with the Welsh Local Government Association on the 21st Century Schools Programme in preparing draft guides of best practice for local authorities to use on school development work, e.g. Design Guides, Sprinkler Protection and a Whole Life Costing Tool. CLAW also continues to work closely with Constructing Excellence in Wales. This year again I was honoured to represent CLAW at the Constructing Excellence in Wales Dinner at Cardiff to present the Project of the Year Award.

I am extremely pleased to see the high standards of entries that are submitted annually by member authorities for the CLAW Building of the Year Award and the Sustainability Award. The entries demonstrate the range of professional skills available and work being undertaken across Wales. In May of this year, I represented CLAW at the official unveiling of the CLAW Sustainability Award Plaque 2009 by Jane Davidson A.M., Minister for Environment, Sustainability and Housing at the Welsh Assembly Government at Ysgol y Graig, Llangefni, Anglesey.

I would like to take this opportunity to thank my fellow members and officers for their help and support received during the year.

I would also like to thank colleagues in Carmarthenshire for their welcome at the Spring Meeting and fellow colleagues in Conwy for hosting this year's AGM.

**Councillor Goronwy Edwards**  
Chairman of CLAW



Ar ddiwedd fy ail flwyddyn fel Cadeirydd, mae'n bleser mawr gen i ysgrifennu'r rhagair i Adroddiad Blynyddol CLAW 2010. Eto eleni, mae'r adroddiad blynyddol yn dangos faint o waith rhagorol sydd wedi'i wneud ac yn rhoi gwybodaeth ynglŷn â phrosiectau diddorol sydd wedi'u cynnal gan awdurdodau sy'n aelodau o CLAW ledled Cymru.

Rydym rŵan yn byw mewn cyfnod economaidd anodd, gyda phwysau ariannol uwch yn cael ei roi ar wasanaethau cyhoeddus. Felly, mae'n bwysig iawn fod

awdurdodau yn cydweithio gyda'i gilydd a gyda sefydliadau eraill lle bynnag y bo'n bosibl er mwyn lleihau costau a darparu gwasanaethau yn fwy economaidd i'n trethdalwyr a'n cwsmeriaid. Mae CLAW bob amser wedi cydnabod yr angen hwn ac yn parhau i hyrwyddo arfer gorau wrth Reoli Eiddo Awdurdodau Lleol er lles ei aelodau.

Enghraifft o gydweithio yw paratoi'r Arweiniad Dylunio Carbon Isel a ddatblygwyd gan Sefydliad Ymchwil Prydain, Ymddiriedolaeth Carbon Cymru a CLAW a cafodd ei lansio yn swyddogol yng Nghyfarfod Aelodau Etholedig Gwanwyn CLAW yn Llanelli ym mis Mai eleni.

Mae CLAW yn gweithio'n agos gyda Chymdeithas Llywodraeth Leol Cymru ar Rhaglen Ysgolion yr 21ain Ganrif wrth baratoi arweiniad drafft o arfer gorau i awdurdodau lleol ei ddefnyddio ar gyfer gwaith datblygu ysgolion, e.e. Arweiniad Dylunio, Diogelu trwy System Chwistrellu, a Dull Cyfrifo Costau Bywyd Cyfan. Mae CLAW hefyd yn parhau i weithio yn agos gydag Adeiladu Arbenigrwydd yng Nghymru. Eto eleni cefais yr anrhydedd o gynrychioli CLAW yng Nghinio Adeiladu Arbenigrwydd yng Nghymru yng Nghaerdydd i gyflwyno Gwobr Prosiect y Flwyddyn.

Rwy'n falch iawn o weld safon uchel y ceisiadau sy'n cael eu cyflwyno bob blwyddyn gan awdurdodau ar gyfer Gwobr Adeilad y Flwyddyn CLAW a'r Wobr Cynladwyedd. Mae'r ceisiadau yn dangos yr ystod sgiliau proffesiynol sydd ar gael a'r gwaith sy'n cael ei wneud ledled Cymru. Ym mis Mai eleni, cynrychiolais CLAW yn nadorchuddiad swyddogol Plac Gwobr Cynladwyedd CLAW 2009, gan Jane Davidson A.C., Gweinidog yr Amgylchedd, Cynladwyedd a Thai, Llywodraeth Cynulliad Cymru, yn Ysgol y Graig, Llangefni, Ynys Môn.

Hoffwn fanteisio ar y cyfle hwn i ddiolch i'm cyd aelodau a swyddogion am eu cymorth a'u cefnogaeth yn ystod y flwyddyn.

Hoffwn hefyd ddiolch i'm cydweithwyr yn Sir Gaerfyrddin am eu croeso yng Nghyfarfod y Gwanwyn a'm cydweithwyr yng Nghonwy am gynnal y Cyfarfod Blynyddol eleni.

**Y Cynghorydd Goronwy Edwards**  
Cadeirydd CLAW

## Report by the Chairman of the Board of Nominated Officers

In my report last year I indicated that it was widely acknowledged that there would be difficult times for public sector finances during the next few years and that public sector spending increases would slow down considerably. The national picture today however, appears to be far worse than what was predicted last year. Local authorities now face many years of significant spending reductions. Following the June 2010 Budget, Government departments are set to have their budgets cut by an average of 25% in real terms over the current Parliament. Cuts in 'unprotected' government spending will be deeper and more protracted than anything in recent years, however, in the meantime, demand for many local authority services, such as care for elderly people, will continue to increase.

As a result of continual budget restrictions, and now forecasted major reductions, local authorities are examining more carefully how to prioritise and spend their reduced budgets. The benefits and savings in time and costs that local authorities gain from being a member of the Consortium of Local Authorities in Wales in collaborating and working together, promoting and supporting joint working between member authorities, and promoting excellence and best practice in the management of property assets and delivery of projects will therefore become even more important. As previously reported, CLAW is a unique association which since its formation nearly fifty years ago has worked to promote best practice in Local Authority Property Management, to the benefit of its constituent member authorities.

Major changes and initiatives have been introduced by the Welsh Assembly Government over the past few years. One of the main initiatives is the 21st Century Schools Programme, which is a long-term major investment Programme for maintained schools by the Welsh Assembly Government in collaboration with the Welsh Local Government Association. The aim of the Programme is to deliver world-class school environments for all young people in Wales, ensuring the school environment is adaptable, sustainable, inclusive and a resource the whole community can use. The Official Launch of the Programme was held at the SWALEC Stadium, Cardiff on Tuesday 16th March 2010 where many CLAW colleagues were in attendance. Leighton Andrews AM, The Minister for Children, Education and Lifelong Learning opened the Launch Conference and stated that School buildings should be places that inspire both learners and teachers, accommodate 21st Century technology and be adaptable to meet the changing needs of learners.

CLAW has been asked to investigate and report upon a number of items for 21st Century Schools. The work that will be undertaken is set out below, including the relevant CLAW lead authority:-



## Adroddiad gan Gadeirydd Bwrdd Swyddogion a Enwebwyd

Yn fy adroddiad y llynedd, nodais fod yna gydnabyddiaeth eang y byddai cyfnod anodd o ran cyllidebau'r sector gyhoeddus dros yr ychydig flynyddoedd nesaf ac y byddai'r cynnydd mewn gwariant cyhoeddus yn lleihau yn sylweddol. Mae'r darlun cyffredinol heddiw fodd bynnag yn ymddangos yn llawer gwaeth na'r hyn a ragwelwyd y llynedd. Mae awdurdodau lleol yn awr yn wynebu sawl blwyddyn o ostyngiadau sylweddol mewn gwariant. Yn dilyn Cyllideb Mehefin 2010, mae adrannau'r Llywodraeth yn wynebu toriadau yn eu cyllidebau o 25% mewn termau real yn ystod y Senedd bresennol. Bydd

torïadau yng ngwariant y llywodraeth nas diogelir yn llawer mwy nag unrhyw beth a welwyd yn ystod y blynyddoedd diwethaf, fodd bynnag, yn y cyfamser, bydd y galw am nifer o wasanaethau llywodraeth leol, fel gofalu am yr henoed, yn parhau i gynyddu.

O ganlyniad i'r cyfyngiadau parhaus ar y gyllideb, a'r gostyngiadau sylweddol a ragwelir yn awr, mae awdurdodau lleol yn edrych yn fwy gofalu ar sut mae blaenoriaethu a gwario cyllidebau llai. Felly bydd hyd yn oed mwy o bwys ar fanteision arbed amser a chostau a geir pan fo awdurdodau lleol fod yn rhan o Gonsortiwm Awdurdodau Lleol yng Nghymru; mae'r awdurdodau hyn yn cydweithio, hyrwyddo a chefnogi gweithio ar y cyd rhwng yr awdurdodau, gan hyrwyddo ardderchowgrwydd ac arfer gorau wrth reoli asedau eiddo a chyflwyno prosiectau. Fel y nodwyd yn flaenorol, mae CLAW yn gymdeithas unigryw ac ers ei ffurfio ymron hanner canrif yn ôl mae wedi gweithio i hyrwyddo arfer gorau wrth Reoli Asedau Awdurdodau Lleol, er lles yr awdurdodau sydd yn aelodau.

Cyflwynwyd newidiadau a chynlluniau mawr gan Lywodraeth Cynulliad Cymru yn ystod yr ychydig flynyddoedd diwethaf. Un o'r prif gynlluniau yw Rhaglen Ysgolion yr 21ain ganrif, sydd yn Rhaglen fuddsoddi tymor hir sylweddol ar gyfer ysgolion a gynhelir gan Lywodraeth Cynulliad Cymru ac sydd yn cydweithio â Chymdeithas Llywodraeth Leol yng Nghymru. Bwriad y Rhaglen yw cyflwyno amgylchedd gystal ag unrhyw fan yn y byd yn ein hysgolion, i bob person ifanc yng Nghymru, gan sicrhau fod yr amgylchedd ysgol yn medru addasu, ei bod yn gynaliadwy, cynhwysol ac yn adnodd y gall y gymuned gyfan ei defnyddio. Cynhaliwyd Lansiad Swyddogol y Rhaglen yn Stadiwm SWALEC, Caerdydd ar Ddydd Mawrth, 16eg o Fawrth 2010 gyda nifer o gydweithwyr CLAW yn bresennol. Dywedodd Leighton Andrews AC, Gweinidog Plant, Addysg a Dysgu Gydol Oes wrth agor y Gynhadledd Lansio y dylai adeiladau Ysgolion fod yn fannau sydd yn ysbrydoli dysgwyr ac athrawon, gan ddarparu technoleg 21ain ganrif ac y dylent fedru addasu i gwrdd ag anghenion newidiol dysgwyr.

Gofynnwyd i CLAW archwilio ac adrodd ar nifer o eitemau ar gyfer Ysgolion yr 21ain Ganrif. Nodir y gwaith sydd i'w wneud isod, gan gynnwys awdurdod arweiniol perthnasol CLAW:-

## Report by the Chairman of the Board of Nominated Officers

- Sprinkler Systems – Ceredigion - Investigate to what degree sprinkler systems will be required to be designed into new / refurbished school buildings.
- Whole Life Costing – Monmouthshire - To advise the Design process by choosing on a whole life basis – choosing the right materials, taking into account Capital costs and Revenue costs.
- Design Standards – Flintshire - To review certain aspects of the Design Guides

At the CLAW Spring Meeting held at Llanelli on 7 May 2010, the 21st Century Schools Programme Director and Programme Manager gave presentations on the Background, Strategic Approach, Aims, Governance, Transitional Funding and Timescale of the Programme.

In response to the development of the 21st Century Schools Programme and as part of further collaboration throughout Wales, a Major Works Collaborative Group has recently been set up by the Welsh Local Government Association where CLAW is one of the stakeholders. The group has been established as a response to the multi-disciplinary need to support practical collaborative opportunity across the life profile of Major Works of Local Authorities and includes procurement representatives as well as property representatives of the four Local government regional areas in Wales. A number of CLAW colleagues sit on this Group. There will also be an opportunity for Local Government representatives from Finance and Education.

The Low Carbon Refurbishment Guide was developed jointly by the Building Research Establishment (BRE) Wales, Carbon Trust Wales and CLAW. The Guide was developed to assist all Welsh Local Authorities to embed energy efficiency improvements and carbon reduction in our building works programmes. The Official Launch of the Guide took place at the CLAW Elected Members Spring Meeting on 7 May 2010.

The continued support given to the Consortium by the Welsh Assembly Government is very much appreciated. CLAW was again honoured last year in that Jane Davidson A.M., Minister for Environment, Sustainability and Housing at the Welsh Assembly Government attended the Annual Dinner at Neath Port Talbot and announced the winners of the CLAW Building of the Year Award and the Sustainability Award. CLAW has again responded to various Consultation Documents from the Welsh Assembly Government throughout the year, for example “Inquiry into Local Authority Farms” – a joint CLAW / ACES Wales (The Association of Chief Estates Surveyors and Property Managers in the Public Sector) response.

CLAW continues to work with Constructing Excellence in Wales. At past meetings of CLAW Elected Members, presentations have been given by Constructing Excellence on very important and topical construction issues such as Construction and Demolition Waste Programme - PAS 402 and the Green Compass Scheme. On Friday evening

## Adroddiad gan Gadeirydd Bwrdd Swyddogion a Enwebwyd

- System Chwistrellu – Ceredigion – Edrych i weld i ba raddau y bydd angen dylunio systemau chwistrellu ar gyfer adeiladau ysgolion newydd/adnewyddu ysgolion.
- Costio Bywyd Cyfan – Sir Fynw – Rhoi cyngor ar y broses Ddylunio drwy ddewis ar sail bywyd cyfan – dewis y defnyddiau cywir, gan ystyried costau Cyfalaf a Refeniw.
- Safonau Dylunio – Sir Fflint – Adolygu rhai agweddau o'r Canllawiau Dylunio

Yng Nghyfarfod Gwanwyn CLAW a gynhaliwyd yn Llanelli ar 7 Mai 2010, cafwyd cyflwyniadau ar Gefndir, Agweddau Strategol, Amcanion, Llywodraethu. Cyllido Trawsnewidiol ac Amserlen y Rhaglenni gan Gyfarwyddwr Rhaglen a Rheolwr Rhaglen Ysgolion 21ain Ganrif.

Mewn ymateb i ddatblygu'r Rhaglen Ysgolion 21ain Ganrif ac fel rhan o'r cydweithio pellach drwy Gymru, sefydlwyd Grŵp Cydweithio Cynlluniau Mawr yn ddiweddar gan Gymdeithas Llywodraeth Leol yng Nghymru lle mae CLAW yn un o'r budd-ddeiliaid. Sefydlwyd y grŵp fel ymateb i'r angen amlddisgyblaethol i gefnogi cyfleoedd cydweithio ymarferol ar draws proffil bywyd Cynlluniau Mawr Awdurdodau Lleol ac mae'n cynnwys cynrychiolwyr caffael yn ogystal â chynrychiolwyr eiddo pedair ardal ranbarthol Llywodraeth Leol yng Nghymru. Mae nifer o gydweithwyr CLAW yn rhan o'r grŵp hwn. Bydd yna hefyd gyfle i gynrychiolwyr Llywodraeth Leol Cyllid ac Addysg.

Datblygwyd y Canllawiau Adnewyddu Carbon Isel ar y cyd â Sefydliad Ymchwil Adeiladau Cymru, Ymddiriedolaeth Carbon Cymru a CLAW. Datblygwyd y Canllaw er mwyn cynorthwyo pob Awdurdod Lleol yng Nghymru i gynnwys gwelliannau effeithlonrwydd ynni a gostwng carbon yn eu rhaglenni gwaith adeiladu. Cynhaliwyd Lansiad Swyddogol y Canllawiau yng Nghyfarfod Gwanwyn Aelodau Etholedig CLAW ar 7 Mai 2010.

Gwerthfawrogrir yn fawr y gefnogaeth barhaus y caiff y Consortiwm gan Lywodraeth Cynulliad Cymru. Anrhydeddwyd CLAW unwaith yn rhagor y llynedd pan fu Jane Davidson A.C., Gweinidog dros yr Amgylchedd, Cynladwyedd a Thai Llywodraeth Cynulliad Cymru yn bresennol yn y Cinio Blynnyddol yng Nghastell Nedd Port Talbot ac enwyd enillwyr Gwobr Adeilad y Flwyddyn a Gwobr Cynladwyedd CLAW. Unwaith eto ymatebodd CLAW i'r amrywiol Ddogfennau Ymgynghori oddi wrth Lywodraeth Cynulliad Cymru drwy gydol y flwyddyn, er enghraifft “Ymholiad i Ffermydd Awdurdodau Lleol” – ymateb ar y cyd gan CLAW / ACES Cymru (Cymdeithas Prif Syrffwyr Ystadau a Rheolwyr Eiddo yn y Sector Gyhoeddus).

Mae CLAW yn parhau i weithio gydag Adeiladu Arbenigrwydd yng Nghymru. Mewn cyfarfodydd yn y gorffennol o Aelodau Etholedig CLAW, cafwyd cyflwyniadau gan Adeiladu Arbenigrwydd ar faterion adeiladu pwysig ac amserol iawn megis Rhaglen Gwastraff Adeiladu a Dymchwel - PAS 402 a'r Cynllun Cwmpawd Gwyrdd. Ar Ddydd Gwener 2il o Orffennaf 2010, bŵm mewn Cinio Gwobrwyo

## Report by the Chairman of the Board of Nominated Officers

2nd July 2010, I attended the Constructing Excellence in Wales Awards Dinner at the SWALEC Stadium in Cardiff with Councillor Goronwy Edwards, Chairman of CLAW. CLAW was sponsoring the Project of the Year Award and Councillor Edwards announced the Winner of this Award – Newport High School, which opened in February 2010 and which was delivered as a collaborative exercise. It was also the first new Secondary School in Wales to achieve BREEAM Excellent.

Collaborative working is already high on the CLAW agenda including strengthening links with other organisations. A Joint SCALA / SCEME / CLAW Study Day entitled “Are we ready for the challenge of a new decade” was held on 10 and 11 June 2010. On the 10th June delegates visited Powys County Council’s Canolfan Hyddgen, in Machynlleth, a post-16 training and education centre. The £1.2million new building was officially opened in March 2009 and has been awarded BREEAM Excellent standard. It is also the first public sector building in the UK to be certified by the Passivhaus Institute. Afterwards, delegates visited the Centre for Alternative Technology (CAT), Machynlleth to attend the closing stages of the official opening of the new Wales Institute for Sustainable Education (WISE) centre, including a presentation by the architect and to visit the premises. On Friday 11th June the Study Day was held at the WISE Conference Centre, Machynlleth which commenced with a welcome and introduction by the SCALA President, Leslie Morrison followed with an opening Keynote Address by Jane Davidson A.M., Minister for Environment, Sustainability and Housing at the Welsh Assembly Government. The morning continued with a series of presentations, followed, after lunch, by break-out workshops, which delegates could elect to attend from a choice of subjects and speakers.

Further meetings have been held between CLAW and the Association for Public Service Excellence (APSE) during the year to discuss future areas of collaboration including Lobbying and Media, Research, Training, Joint Event and Speakers, and Benchmarking. CLAW was invited to attend and gave a presentation on “Asset Management - Case Study of Accommodation Strategy” at the APSE Building Maintenance Group Meeting at the Pavilion, Llandrindod Wells on 20 April 2010.

Training events have continued to be arranged through IPF Property – Strategic Asset Management Planning (AMP) Network, where free delegate places are offered to CLAW member authorities. Recently organised events include “An AMP for All Seasons” and “AMPLification and IFRS Implications”

CLAW has been represented at the Value Wales Barriers Project Board Meetings during the last year. The purpose is to remove “Barriers” in the public sector procurement process. A document has been prepared containing the questions that will be used for the Supplier Qualification Information Database and the guidance that will be available to buyers on the selection and use of the

## Adroddiad gan Gadeirydd Bwrdd Swyddogion a Enwebwyd

Adeiladu Arbenigrwydd yng Nghymru yn Stadiwm SWALEC yng Nghaerdydd gyda'r Cynghorydd Goronwy Edwards, Cadeirydd CLAW. Roedd CLAW yn noddi Gwobr Prosiect y Flwyddyn a'r Cynghorydd Edwards oedd yn enwi Enillydd y Wobr hon - Ysgol Uwchradd Casnewydd, a agorodd ym mis Chwefror 2010 ac a gyflwynwyd fel ymarfer ar y cyd. Dyma'r Ysgol Uwchradd newydd gyntaf yng Nghymru i dderbyn Ardderchogrwydd BREEAM.

Mae cydweithio eisoes yn uchel ar agenda CLAW gan gynnwys cryfhau cysylltiadau gyda sefydliadau eraill. Cynhaliwyd Diwrnod Astudio ar y cyd rhwng SCALA / SCEME / CLAW o'r enw “A ydym yn barod am her degawd newydd” ar Fehefin 10 ac 11, 2010. Ar Fehefin 10fed, bu cynrychiolwyr yn ymweld â Chanolfan Hyddgen ym Machynlleth, canolfan hyfforddiant ac addysg ôl 16. Agorwyd yr adeilad newydd £1.2miliwn yn swyddogol ym Mawrth 2009 a derbyniodd wobwr safon Ardderchogrwydd BREEAM. Dyma hefyd yr adeilad sector gyhoeddus cyntaf yng Nghymru i gael ei dystio gan Sefydliad Passivhaus. Yna bu cynrychiolwyr yn ymweld â'r Ganolfan Technoleg Amgen ym Machynlleth er mwyn bod yn bresennol yn y rhan olaf o agoriad swyddogol canolfan newydd Sefydliad Addysg Gynaliadwy Cymru, gan gynnwys cyflwyniad gan y pensaer ac ymweld â'r adeiladau. Ar Ddydd Gwener 11eg o Fehefin, cynhaliwyd Diwrnod Astudio yng Nghanolan Sefydliad Addysg Gynaliadwy Cymru, Machynlleth a gychwynwyd gan groeso a chyflwyniad gan Lywydd SCALA, Leslie Morrison a dilynwyd gan Anerchiad Allweddol agoriadol gan Jane Davidson A.C., Gweinidog yr Amgylchedd, Cynladwyedd a Thai yn Llywodraeth Cynulliad Cymru. Yna cafwyd cyfres o gyflwyniadau yn ystod y bore, a dilynwyd hyn gan ginio a gweithdai lle gallai cynrychiolwyr ddewis o blith amryw o bynciau a siaradwyr.

Cynhaliwyd cyfarfodydd pellach rhwng CLAW a'r Gymdeithas dros Ardderchogrwydd mewn Gwasanaethau Cyhoeddus yn ystod y flwyddyn er mwyn trafod meysydd lle gellid cydweithio yn y dyfodol gan gynnwys Lobio a'r Cyfryngau, Ymchwil, Hyfforddiant, Digwyddiadau a Siaradwyr ar y cyd a Meincnodi. Gwahoddwyd CLAW i fod yn bresennol a rhoddwyd cyflwyniad ar “Reoli Asedau - Astudiaeth Achos o Strategaeth Adeiladau” yng Nghyfarfod Gr\_p Cynnal a Chadw Adeiladau'r Gymdeithas dros Ardderchogrwydd mewn Gwasanaethau Cyhoeddus yn y Pafiliwn, Llandrindod ar 20 Ebrill 2010.

Roedd digwyddiadau hyfforddiant yn parhau i gael eu trefnu drwy Rwydwaith Eiddo IPF - Cynllunio Strategol i Reoli Asedau (AMP), lle cynigiwyd llefydd rhad ac am ddim i gynrychiolwyr o awdurdodau sydd yn aelodau o CLAW. Yn ddiweddar trefnwyd digwyddiadau gan gynnwys “An Amp for All Seasons” ac “AMPLification and IFRS Implications”

Cynrychiolwyd CLAW yng Nghyfarfodydd Bwrdd Prosiect Rhwystrau Gwerth Cymru'r llynedd. Y nod yw dileu “Rhwystrau” yn y broses gaffael yn y sector gyhoeddus. Paratowyd dogfen a oedd yn cynnwys cwestiynau a ddefnyddir ar gyfer y Gronfa Ddata Gwybodaeth Cymhwys Cyflenwyr a'r canllaw a fydd ar gael i brynwyr wrth ddewis a defnyddio cwestiynau. Mae'r ddogfen yn cynnwys catalog

## Report by the Chairman of the Board of Nominated Officers

questions. The document includes a catalogue of standard Pre Qualification Questionnaire questions and provides guidance to public-sector buyers on how to select and tailor the qualification and evaluation questions for a pre-qualification questionnaire.

CLAW has continued to work with the Local Government Data Unit (LGDU) Wales in relation to the Welsh Assembly Government's new Core Set Asset Management Performance Indicators and CLAW's own benchmarking indicators. An informative overview of the returns for 2008 / 09 was given to the Board of Nominated Officers by the LGDU on 26 February of this year. The statutory indicators, including the benchmarking data are available on the CLAW website. The information is also available on the LGDU website which can be accessed via a link from the CLAW website. A demonstration of the "InfoBase" system developed by the LGDU was also given at the Board meeting. The system gives easy access to a wide range of statistics and indicators for different areas in Wales. The statistics cover a range of themes including people, economy, education, health, housing and crime.

I am again grateful to the following people for undertaking various work on behalf of the Consortium last year – Peter Turner on the CLAW website and members database; Rob Shelton in arranging the collection and collation of entries for the CLAW Building of the Year Award, Sustainability Award and Annual Report and in assisting several of the CLAW Working Groups to develop skills so that the website can be updated with minutes of meetings together with other documents; and Professor Phil Jones of the Welsh School of Architecture, Cardiff University in chairing and advising the CLAW Awards Panel.

The Working Groups have again been busy this year and I would personally like to thank the Chairman of each group for their hard work and to the work undertaken by the Groups in accordance with the priorities set out in the CLAW Business Strategy – Work Programme. The Working Group Chairmen have provided their own reports on the following pages.

As I reach the end of my two-year term of office as Chairman of the Board of Nominated Officers, I would also like to take this opportunity to thank members of the Board and the Steering Group for their support and commitment during the past year.

In concluding, I would also like to thank Elected Members, and in particular, the Chairman Councillor Goronwy Edwards and Vice Chairman Councillor Keith Evans for their consistent help and support and wish every success to the incoming Chairs of the Elected Members and the Board of Nominated Officers.

**Keith Morgan**

Chairman of the CLAW Board of Nominated Officers

## Adroddiad gan Gadeirydd Bwrdd Swyddogion a Enwebwyd

o gwestiynau safonol Holiadur Cyn Cymhwysio ac yn rhoi canllawiau i brynwyr y sector gyhoeddus ar sut i ddethol a theilwra'r cymhwyster a chwestiynau arfarnu ar gyfer holiadur cyn - gymhwysio.

Mae CLAW wedi parhau i weithio gyda'r Uned Ddata Llywodraeth Leol yng Nghymru yng nghyswllt Dangosyddion Perfformiad Rheoli Asedau Gosod Craidd newydd Llywodraeth Cynulliad Cymru a dangosyddion meincnodi CLAW ei hun. Rhoddwyd golwg gyffredinol llawn gwybodaeth ar y ffurflenni ar gyfer 2008 / 09 i'r Bwrdd Swyddogion a Enwebwyd gan Uned Ddata Llywodraeth Leol ar 26 Chwefror eleni. Mae'r dangosyddion statudol, gan gynnwys data meincnodi ar gael ar wefan CLAW. Hefyd rhoddwyd arddangosfa o system "InfoBase" a ddatblygwyd gan Uned Ddata Llywodraeth Leol, yn y cyfarfod o'r Bwrdd. Mae'r system hon yn rhoi mynediad hawdd i amrediad o ystadegau a dangosyddion ar gyfer gwahanol ardaloedd yng Nghymru. Mae'r ystadegau yn cynnwys amrediad o themâu gan gynnwys pobl, economi, addysg, iechyd, tai a throeddau.

Yr wyf yn ddiolchgar unwaith yn rhagor i'r bobl ganlynol am ymgymryd ag amrywiol waith ar ran y Consortiwm y llynedd - Peter Turner am wefan CLAW a chronfa ddata aelodau; Rob Shelton am drefnu'r casglu a choladu ar gyfer Cystadleuaeth Adeilad y Flwyddyn CLAW, Gwobr Cynladwyedd a'r Adroddiad Blynyddol ac am gynorthwyo nifer o Weithgorau CLAW i ddatblygu sgiliau fel y gellir diweddarau'r wefan gyda chofnodion cyfarfodydd ynghyd â dogfennau eraill; a'r Athro Phil Jones o Ysgol Pensaerniaeth Cymru, Prifysgol Caerdydd, yn cadeirio a chynghori Panel Gwobrau CLAW.

Unwaith eto bu'r Gweithgorau yn brysur eleni a hoffwn ddiolch yn bersonol i Gadeirydd pob grŵp am eu gwaith caled ac am y gwaith a wnaethpwyd gan Grwpiau yn unol â'r blaenoriaethau a osodwyd gan Strategaeth Busnes CLAW – Rhaglen Waith. Darparwyd adroddiadau eu hunain gan Gadeiryddion Gweithgorau ar y tudalennau canlynol.

Wrth i mi gyrraedd diwedd fy nghyfnod o ddwy flynedd fel Cadeirydd Bwrdd Swyddogion a Enwebwyd, hoffwn hefyd fanteisio ar y cyfle hwn i ddiolch i aelodau o'r Bwrdd a'r Grŵp Llywio am eu cymorth a'u hymroddiad yn ystod y flwyddyn ddiwethaf.

I gloi, hoffwn hefyd ddiolch i'r Aelodau Etholedig, ac yn enwedig i'r Cadeirydd, y Cynghorydd Goronwy Edwards a'r Is-gadeirydd y Cynghorydd Keith Evans am eu cymorth a'u cefnogaeth gyson gan ddymuno pob llwyddiant i ddarpar Gadeiryddion yr Aelodau Etholedig a Bwrdd y Swyddogion a Enwebwyd.

**Keith Morgan**

Cadeirydd Bwrdd Swyddogion a Enwebwyd CLAW

## CLAW Performance Management Group

This year has seen the third year's publication of the new Welsh Assembly Government Core Asset Management set of performance indicators. This follows the earlier work to pilot new indicators which CLAW undertook with the Local Government Data Unit Wales (LGDU). The indicators cover:

- CAM 001 - Condition of Non-Domestic Buildings and the Priorities of Required Maintenance

The questionnaires were sent out by the LGDU Wales to local authorities in April 2010 for return of completed questionnaires by June 2010. The results were initially made available to authorities for internal review and were subsequently published during the autumn.

CLAW has also retained the services of LGDU Wales again this year to assist with the administration of the Local Performance Indicator questionnaires for 2009/10 data and thanks again go to Ana Harries and her team for this assistance. These CLAW indicators are for use by authorities, and hence are not published. These were sent out by LGDU Wales to all authorities in August 2010 and the completed questionnaires were returned to the LGDU Wales by mid October 2010. A web-based system developed by LGDU will again assist with this process.

The process of reviewing results and comparing trends, together with notable performance, continues as authorities use this performance information to assist with improving standards of service delivery. A meeting to obtain feedback from the Local Government Data Unit Wales on the results of the CLAW Benchmarking Performance Indicators 2008 / 09 was held at the Pavilion, Llandrindod Wells on 26 February 2010.

CLAW continues to contribute to the National Property Performance Management Initiative, (NaPPMI) which is a forum of property practitioners developing national Performance Indicators in England.

### **Gareth Nutt**

Chairman of the Performance Management Group

## CLAW Grŵp Rheoli Perfformiad

Eleni, am y trydydd flwyddyn, gwelwyd cyhoeddi dangosyddion perfformiad newydd Rheoli Asedau Craidd Llywodraeth Cynulliad Cymru. Mae hyn yn dilyn gwaith a wnaed eisoes gan CLAW ac Uned Ddata Llywodraeth Leol Cymru. Mae'r dangosyddion yn cynnwys:

- CAM 001 – Cyflwr Adeiladau Annomestig a'r Blaenoriaethau o safbwynt y Gwaith Cynnal y mae'n rhaid ei wneud

Cafodd yr holiaduron eu hanfon allan i awdurdodau lleol gan Uned Ddata Llywodraeth Leol Cymru yn Ebrill 2010 a gofynnwyd amdanynt yn ôl erbyn Mehefin 2010. Yn y lle cyntaf, cafodd y canlyniadau eu rhyddhau i awdurdodau ar gyfer eu hadolygu'n fewnol a chawsant eu cyhoeddi yn ystod yr hydref.

Mae CLAW am ddefnyddio gwasanaethau Uned Ddata Llywodraeth Leol Cymru eto eleni i gynorthwyo gyda'r gwaith gweinyddol sydd ynghlwm wrth ddata'r holiaduron Dangosyddion Perfformiad Lleol ar gyfer 2009/10 a rhaid diolch i Ana Harries a'i thîm am y cymorth hwn. Mae'r dangosyddion CLAW hyn ar gyfer defnydd yr awdurdodau ac, o'r herwydd, ni chânt eu cyhoeddi. Cafodd y rhain eu hanfon i bob awdurdod gan Uned Ddata Llywodraeth Leol Cymru ddiwedd mis Awst 2010 ac anfonwyd yr holiaduron yn ôl i'r Uned erbyn canol mis Hydref 2010. Mae system newydd ar y we wedi cael ei datblygu gan Uned Ddata Llywodraeth Leol Cymru ar gyfer eleni er mwyn cynorthwyo gyda'r broses hon.

Mae'r broses o adolygu canlyniadau a chymharu tueddiadau ynghyd â pherfformiad hynod yn parhau wrth i aelodau ddefnyddio'r wybodaeth hon ynghylch perfformiad i wella safon y gwasanaeth a ddarperir. Cynhaliwyd cyfarfod i gael adborth gan Uned Ddata Llywodraeth Leol Cymru am ganlyniadau Dangosyddion Perfformiad Meincnodi CLAW 2008/09 yn y Pafiliwn, Llandrindod ar 26 o Chwefror 2010.

Mae CLAW yn parhau i gyfrannu at y Fenter Genedlaethol ar gyfer Rheoli Perfformiad Eiddo, sef fforwm o ymarferwyr eiddo sy'n datblygu Dangosyddion Perfformiad yn Lloegr.

### **Gareth Nutt**

Cadeirydd, Grŵp Rheoli Perfformiad

## CLAW – Building Maintenance Group

During the last twelve months, the Group met on only two occasions. At the autumn meeting, the Group benefited from an excellent presentation by Durable Ltd. on guidance to regulation 14 of the Workplace (Health, Safety & Welfare) Regulations 1992 – Safety of Glazing which deals with the safety of windows, transparent or translucent doors, gates and walls. Premises Managers should establish whether glazing in their premises meets the current standards and take the necessary remedial action where these standards have not yet been implemented.

At the winter meeting, a presentation was given by Hertel on the Legal Responsibilities for Legionella Duty Holders and Managers. Legionnaires' disease is a potentially fatal form of pneumonia which can affect anybody, but which principally affects those who are susceptible because of age, illness, smoking etc. In the UK the Health and Safety Commissions (HSC) ACoP L8 - Approved Code of Practice and Guidance document titled "Legionnaires' disease: The control of Legionella bacteria in water systems" gives practical advice on how to comply with UK health and safety law with respect to the control of Legionella bacteria. The Code of Practice applies to all businesses in the UK, who store or use water in a manner that is likely to create an aerosol, irrespective of the industry sector to which they belong. Risk assessments need to be undertaken on all individual sites, followed by the control and monitoring of each site. Building users need to be aware of their responsibilities under L8.

These agenda items had ensured good attendance and similar presentations are intended for future meetings.

### **A. Ives**

Chairman, Building Maintenance Group

## CLAW – Grŵp Cynnal Adeiladau

Yn ystod y deuddeg mis diwethaf, cyfarfu'r Grŵp ar ddau achlysur yn unig. Yng nghyfarfod yr hydref, cafodd y Grŵp gyflwyniad ardderchog gan Durable Ltd. ar y canllawiau i reoliad 14 o Reoliadau'r Gweithle (Iechyd, Diogelwch a Lles) 1992 - Diogelwch Gwydr sydd yn delio â diogelwch ffenestri, drysau, gatau a waliau tryloyw. Dylai Rheolwyr Adeiladau sicrhau a yw'r gwydr yn eu hadeiladau yn cwrdd â safonau presennol ac yn cymryd camau i unioni hyn pam nad yw'r safonau hyn yn cael eu gweithredu.

Yng nghyfarfod y gaeaf, rhoddwyd cyflwyniad gan Hertel ynglŷn â chyfrifoldebau Deiliaid y Cyfrifoldeb a Rheolwyr Legionella. Mae clefyd Legionnaires yn ffurf o pneumonia a all fod yn anghueol ac gall effeithio ar unrhyw un ond yn bennaf mae'n effeithio ar y rhai hynny sydd â thuedd i'w gael oherwydd oedran, salwch, ysmegu ayb. Yn y Deyrnas Unedig mae dogfen Cod Ymarfer a Chanllawiau o'r enw "Clefyd Legionnaires: Rheoli bacteria Legionella mewn systemau dŵr" yn rhoi cyngor ymarferol ar sut i gydymffurfio â deddfau iechyd a diogelwch y Deyrnas Unedig yng nghyswllt rheoli bacteria Legionella. Mae'r Cod Ymarfer yn gymwys i bob busnes yn y Deyrnas Unedig, sydd yn storio neu'n defnyddio dŵr mewn modd sydd yn debygol o greu aerosol, heb ystyried y sector diwydiant y maent yn perthyn iddo. Mae angen i asesiadau risg gael eu cyflawni ar bob safle unigol, gan reoli a monitro pob safle wedi hynny. Bydd angen i ddefnyddwyr yr adeiladau fod yn ymwybodol o'u cyfrifoldebau o dan L8.

Roedd yr eitemau hyn ar yr agenda wedi sicrhau presenoldeb da a bwriedir cael cyflwyniadau tebyg ar gyfer cyfarfodydd y dyfodol.

### **A. Ives**

Cadeirydd, Grŵp Cynnal Adeiladau

## CLAW Design Group

2010 has been another quiet year for the design group in terms of formal meetings. Restructuring and cost-cutting have increased resource pressures on everyone, and making time to attend meetings is more difficult than ever.

The six North Wales Counties forming the northern sub-group have held informal meetings to discuss a wide range of matters of common interest. Collaboration has been high on the agenda - particularly the work of the North Wales Procurement Partnership. Various other collaborative ventures have been discussed, including the implementation of a joint 'Approved List' in NE Wales by Flintshire, Denbighshire and Wrexham.

The southern authorities have not held group meetings, but have been focussing on issues like the CLAW Low Carbon Design Guide with colleagues in the Energy and M&E groups. Some authorities in particular have had extensive involvement with this project, which is now part of the Welsh Assembly Government sponsored Sustainable Building Portal.

This site, produced in conjunction with BRE and the Carbon Trust for the Assembly will form part of the new SCRiPt (Sustainable Construction Service Platform) project. These initiatives are concerned with production of an all-encompassing internet site dealing with sustainable building issues with a strong emphasis on Wales. CLAW design group members are also part of the development team.

All authorities are following the development of the evolution of the 21st Century Schools programme with great interest. Recent developments in terms of setting up common frameworks for procurement with NWPP in the north and SEWSCAP in the south; and the proposals for the introduction of a standardised schools Design Guide will pose new challenges. It is anticipated that the Design Group will need to revert to more formalised meetings to coordinate authorities' approach to these issues.

**Jim Allen**  
Chairman Design Group

## Grŵp Dylunio CLAW

Bu 2010 yn flwyddyn dawel arall i'r grŵp dylunio o ran cyfarfodydd ffurfiol. Yn sgil ad-drefnu a chwtogi ar gostau, mae yno fwy o wasgedd ar adnoddau pawb, ac mae mynd i gyfarfodydd yn anos nag erioed.

Mae'r chwe sir yng ngogledd Cymru sy'n rhan o is-grŵp y gogledd wedi cynnal cyfarfodydd anffurfiol i drafod amrywiaeth o faterion cyffredin. Roedd cydweithio yn rhan bwysig o'r agenda - yn enwedig felly gwaith Partneriaeth Caffael Gogledd Cymru. Cynhaliwyd trafodaethau ynglŷn â sawl menter arall ar y cyd, gan gynnwys llunio 'Rhestr Gymeradwy' ar gyfer gogledd ddwyrain Cymru, ar y cyd rhwng Sir y Fflint, Sir Ddinbych a Wrecsam.

Ni chynhaliodd awdurdodau'r deheubarth unrhyw gyfarfodydd grŵp, ond buont yn canolbwyntio ar faterion megis Canllaw Dylunio Carbon Isel CLAW gyda chydweithwyr yn y grwpiau Ynni a Monitro a Mesur Gwerth. Mae rhai awdurdodau yn benodol wedi gweithio'n ddwys ar y prosiect hwn, sydd bellach yn rhan o'r Porth Adeiladu Cynaliadwy a noddir gan Lywodraeth y Cynulliad.

Bydd y wefan hon, a luniwyd ar gyfer y Cynulliad ar y cyd â BRE a'r Ymddiriedolaeth Garbon, a bydd yn rhan o'r prosiect newydd SCRiPt (Llwyfan Gwasanaethau Adeiladu Cynaliadwy). Y mae a wnelo'r mentrau hyn â chreu gwefan gynhwysfawr sy'n ymdrin â materion adeiladu cynaliadwy, gan roi pwyslais arbennig ar Gymru. Mae aelodau grŵp dylunio CLAW hefyd yn rhan o'r tîm datblygu.

Mae'r holl awdurdodau yn rhoi sylw craff i ddatblygiad y Rhaglen Ysgolion ar gyfer yr Unfed Ganrif ar Hugain. Gwnaed cynnydd yn ddiweddar wrth sefydlu fframweithiau caffael cyffredin gyda Phartneriaeth Caffael Gogledd Cymru a Gweithgor Cyfalaf Ysgolion De Ddwyrain Cymru; a bydd y cynigion ar gyfer cyflwyno Canllaw Dylunio safonol ar gyfer ysgolion yn sicr o'n herio. Rhagwelir y bydd gofyn i'r Grŵp Dylunio ddychwelyd i'r drefn o gynnal cyfarfodydd mwy ffurfiol, er mwyn gallu cydlynu dulliau gweithredu'r awdurdodau wrth fynd i'r afael â'r materion hyn.

**Jim Allen**  
Cadeirydd y Grŵp Dylunio

## CLAW Energy Group

## Grŵp Ynni CLAW

At the start of 2010, a new Convenor and Deputy were appointed allowing John Llewellyn of Swansea CC to step down. The hard work of John during his time as Convenor has been greatly appreciated, as has the contribution of the following members who volunteered to co-ordinate specific duties during 2009/10:

Deputy Convenor: Adrian Williams, Ynys Môn  
Web Site: Steve Keating, Pembrokeshire  
EIC Reports: David Powell, Vale of Glamorgan  
Presentations & Events: Will Pierce, Flintshire  
Low Carbon Energy Assessor Training: Andrew Morris, Carmarthenshire  
Low Carbon Design Guide: David Mundow, Cardiff

The Energy Group meetings take place quarterly at Ceredigion County Council offices, Aberaeron. These forums continue to be extremely well attended and include representation from the Carbon Trust Wales.

The Energy Group forums regularly include a guest speaker and presentations were received from the following organisations during 2009/10:

HJ Controls, "Micro Wind Turbines"  
Megaman Ltd, "Lighting Technology"  
Mark Group, "Renewable Technology"  
Building Research Establishment, "Low Carbon Design Guide"

During 2009/10, the CLAW Energy Group have concentrated efforts on the following energy management topics:

### Carbon Trust Partnership

Carbon Trust Wales have continued to support CLAW Energy Group members with various carbon reduction programmes.

A number of Local Authorities have been involved in a Carbon Trust study using Display Energy Certificate (DEC) ratings to identify inefficient buildings and assess improvement measures. The Carbon Trust have continued to support and develop members' carbon management programmes, either individually or as part of their Local Service Boards, and provided assistance in accessing SALIX funding for projects. This assistance has enabled some Authorities to successfully achieve the Carbon Trust Standard as a CRC Early Action Metric.

### Low Carbon Design Guide (LCDG)

Launched in May 2010 at the CLAW Spring Meeting, the LCDG is a web resource providing access to guidance on sustainability and low carbon design principles in buildings. With an initial focus on refurbishment projects, the site will undergo ongoing development as part of a University of Wales project and can be viewed at [www.sustainablebuildingportal.co.uk](http://www.sustainablebuildingportal.co.uk).

Ar drothwy 2010, penodwyd Cynullydd a Dirprwy newydd sydd wedi galluogi John Llewellyn o Gyngor Dinas Abertawe i ymddiswyddo. Gwerthfawrogir yn fawr y gwaith caled a wnaeth John yn ystod ei gyfnod fel Cynullydd, yn ogystal â chyfraniad yr aelodau a ganlyn a oedd wedi gwirfoddoli i gydlynu dyletswyddau penodol yn ystod 2009/10:

Dirprwy Gynullydd: Adrian Williams, Ynys Môn  
Gwefan: Steve Keating, Sir Benfro  
Adroddiadau EIC: David Powell, Bro Morgannwg  
Cyflwyniadau a Digwyddiadau: Will Pierce, Sir y Fflint  
Hyfforddiant Aseswyr Ynni Carbon Isel: Andrew Morris, Sir Gâr  
Canllaw Dylunio Carbon Isel: David Mundow, Caerdydd

Mae cyfarfodydd y Grŵp Ynni yn cael eu cynnal bob chwarter yn swyddfeydd Cyngor Sir Geredigion, Aberaeron. Mae nifer dda iawn yn parhau i ddod i'r fforymau hyn, ac maent yn cynnwys cynrychiolydd o Ymddiriedolaeth Carbon Cymru.

Mae fforymau'r Grŵp Ynni yn aml yn cynnwys siaradwr gwadd, a chafwyd cyflwyniadau gan y sefydliadau a ganlyn yn ystod 2009/10:

HJ Controls, "Tyrbinau Gwynt Micro"  
Megaman Cyf, "Technoleg Goleuo"  
Mark Group, "Technoleg Adnewyddadwy"  
Y Sefydliad Ymchwil Adeiladu, "Canllaw Dylunio Carbon Isel"

Yn ystod 2009/10, mae Grŵp Ynni CLAW wedi canolbwyntio ymdrechion ar y testunau rheoli ynni a ganlyn:

### Partneriaeth Ymddiriedolaeth Carbon

Mae Ymddiriedolaeth Carbon Cymru wedi parhau i gefnogi aelodau Grŵp Ynni CLAW ag amrywiol raglenni lleihau carbon.

Mae nifer o Awdurdodau Lleol wedi bod yn rhan o astudiaeth yr Ymddiriedolaeth Carbon sy'n defnyddio graddegau Tystysgrif Ynni i bennu adeiladau aneffeithlon ac asesu mesurau gwella. Mae'r Ymddiriedolaeth Carbon wedi parhau i gefnogi a datblygu rhaglenni rheoli carbon yr aelodau, un ai'n unigol neu fel rhan o'u Byrddau Gwasanaeth Lleol, ac wedi rhoi help llaw i sicrhau arian cyllido SALIX ar gyfer y prosiectau. Mae'r cymorth hwn wedi galluogi rhai Awdurdodau i gyrraedd Safon yr Ymddiriedolaeth Carbon fel Metrig Gweithredu Cynnar yr Ymrwymiad Lleihau Carbon.

### Canllaw Dylunio Carbon Isel

Lansiwyd y Canllaw Dylunio Carbon Isel ym mis Mai 2010 yng Nghyfarfod y Gwanwyn CLAW, a'r hyn ydyw yw adnodd ar y we sy'n cyflwyno canllaw ar gynaliadwyedd ac egwyddorion dylunio carbon isel mewn adeiladau. Canolbwyntir i ddechrau ar brosiectau

## CLAW Energy Group

## Grŵp Ynni CLAW

The LCDG is the result of a joint venture between BRE Wales, Carbon Trust Wales, CLAW, and WAG. Along with representatives from other CLAW groups, David Mundow of Cardiff CC made a key contribution to the success of the project while other Energy Group members were also able to assist in reviewing the guide.

### **Carbon Reduction Commitment Energy Efficiency Scheme (CRC)**

During 2009/10, the Energy Group members have continued to seek guidance and share information in preparation for the Carbon Reduction Commitment Energy Efficiency Scheme (CRC).

CRC is a mandatory emissions trading scheme that will set limits on carbon dioxide emissions for large non energy intensive organisations in the UK, and impose financial penalties for non compliance or poor performance. By virtue of energy consumption during the 2008 qualifying period, the majority of CLAW member organisations qualify for full participation.

Through the Energy Group forums, members have been able to keep abreast of regulatory guidance as it has developed and discuss compliance strategies, including the implementation of Early Action Metrics. CLAW also agreed to fund the purchase of the London Energy Project CRC Guide and Toolkit, providing members with useful materials to raise awareness of the scheme and assess the impact of CRC.

This sharing of information has assisted members in their preparations for registration in the scheme between April and September 2010, and will continue to prove valuable in their developing strategies to ensure ongoing compliance and improve performance in published CRC league tables.

### **Automatic Meter Reading (AMR)**

Automatic Meter Reading (AMR) options and strategies have been a regular topic of discussion at Energy Group meetings. As a result, many Local Authorities are proceeding with AMR installation programmes implemented through OGC Buying Solutions framework agreements for the supply and purchase of energy.

The accuracy and availability of energy consumption data provided by AMR will allow financial savings to be realised resulting from data analysis and accurate invoicing. AMR will ensure accurate reporting for CRC statement, Display Energy Certificate (DEC), and performance indicator production, and count as a CRC Early Action Metric.

ailwampio, ac yna bydd y wefan yn parhau i gael ei datblygu fel rhan o brosiect Prifysgol Cymru ac mae'n bosibl ei gweld yn [www.sustainablebuildingportal.co.uk](http://www.sustainablebuildingportal.co.uk).

Ffrwyth menter ar y cyd rhwng BRE Cymru, Ymddiriedolaeth Carbon Cymru, CLAW a LICC yw'r Canllaw Dylunio Carbon Isel. Law yn llaw â chynrychiolwyr o grwpiau eraill CLAW, aeth David Mundow o Gyngor Dinas Caerdydd ati i wneud cyfraniad allweddol at lwyddiant y prosiect, tra bo aelodau eraill o'r Grŵp Ynni hefyd yn gallu helpu i adolygu'r canllaw.

### **Cynllun Effeithlonrwydd Ynni yr Ymrwymiad Lleihau Carbon**

Yn ystod 2009/10, mae aelodau'r Grŵp Ynni wedi parhau i chwilio am arweiniad a rhannu gwybodaeth i baratoi ar gyfer Cynllun Effeithlonrwydd Ynni yr Ymrwymiad Lleihau Carbon.

Mae'r Ymrwymiad Lleihau Carbon yn gynllun masnachu allyriadau gorfodol fydd yn gosod cyfyngiadau ar allyriadau carbon deuocsid y sefydliadau nad ydynt yn ynni-ddwys yn y Deyrnas Unedig, ac yn gosod cosbau ariannol am beidio â chydymffurfio neu am berfformiad gwael. O ran defnyddio ynni yn ystod cyfnod cymhwys 2008, mae'r rhan fwyaf o aelod sefydliadau CLAW yn gymwys am gyfranogiad llawn.

Trwy fforymau'r Grŵp Ynni, bu'n bosibl i'r aelodau ddilyn y canllaw rheoli wrth iddo gael ei ddatblygu a thrafod strategaethau cydymffurfio, gan gynnwys gweithredu'r Metrig Gweithredu Cynnar. Cytunodd CLAW hefyd i roi arian tuag at brynu Canllaw ac Arweinlyfr Ymrwymiad Lleihau Carbon y London Energy Project, i ddarparu'r aelodau â deunyddiau defnyddiol i godi ymwybyddiaeth ynghylch y cynllun ac asesu effaith yr Ymrwymiad Lleihau Carbon.

Trwy fynd ati i rannu'r wybodaeth yn y fath fodd, bu'n bosibl i'r aelodau baratoi ar gyfer cofrestru yn y cynllun rhwng Ebrill a Medi 2010, a bydd yn parhau i fod yn werthfawr yn eu strategaethau datblygol i sicrhau y parheir i gydymffurfio a gwella perfformiad yn nhablau cynghrair argraffedig yr Ymrwymiad Lleihau Carbon.

### **Darllen Metrau Awtomatig**

Mae opsiynau a strategaethau Darllen Metrau Awtomatig wedi bod yn destun trafod rheolaidd yng nghyfarfodydd y Grŵp Ynni. Yn sgil hynny, mae nifer o Awdurdodau lleol yn parhau â rhaglenni gosod Darllen Metrau Awtomatig a weithredir trwy gytundebau fframwaith Buying Solutions Swyddfa Masnach y Llywodraeth ar gyfer cyflenwi a phrynu ynni.

Bydd cywirdeb ac argaeledd y data defnyddio ynni a ddarperir trwy Ddarllen Metrau Awtomatig yn galluogi i arbedion ariannol gael eu gwireddu yn sgil dadansoddi data ac anfonebu cywir. Bydd Darllen Metrau Awtomatig yn sicrhau dulliau adrodd cywir ar gyfer datganiad

## CLAW Energy Group

## Grŵp Ynni CLAW

### **CLAW Web Site**

Energy Group members continue to make good use of the CLAW website to share information and best practice.

In addition to all meeting agendas, minutes, and action plans, technical documents and links to other sources are regularly published. During 2009/10, these have included data on demonstration projects, an example tender specification, and CRC guidance. CLAW have continued to fund the receipt of energy market and price reports from the Energy Information Centre (EIC) regularly published on the web site.

### ***Ian Hoccom***

Convenor, Energy Group

yr Ymrwymiad Lleihau Carbon, y Dystysgrif Ynni, a llunio dangosyddion perfformiad, ac yn cyfrif fel Metrig Gweithredu Cynnar yr Ymrwymiad Lleihau Carbon.

### **Gwefan CLAW**

Mae aelodau'r Grŵp Ynni'n parhau i wneud defnydd da o wefan CLAW i rannu gwybodaeth ac arferion da.

Yn ogystal â holl raglenni'r cyfarfodydd, caiff y cofnodion, y cynlluniau gweithredu, y dogfennau technegol a dolenni cyswllt i ffynonellau eraill eu cyhoeddi'n rheolaidd. Yn ystod 2009/10, mae'r rhain wedi cynnwys data am brosiectau arddangos, enghraifft o fanyleb tendro, a chanllaw'r Ymrwymiad Lleihau Carbon. Mae CLAW wedi parhau i ariannu derbyn adroddiadau am y farchnad ynni a phrisiau gan y Ganolfan Gwybodaeth ar Ynni a gyhoeddir yn rheolaidd ar y wefan.

### ***Ian Hoccom***

Cynullydd, Grŵp Ynni

## CLAW Asset Management Group

## Grŵp Rheoli Asedau CLAW

The Wales Audit Office report into Building Management was completed and generally perceived to be a much more rounded and helpful report than its English equivalent. This did not preclude some debate at an individual authority level certainly around consistency and the level of subject understanding of some Auditors.

Generally the report shows a journey of improvement, albeit the pace has been relatively modest, with most now having Asset Management Plans in place but still questions as to how deeply the Asset Management is embedded into the business planning process.

Certainly feedback on the lack of potential focus from a strategic perspective by Welsh Assembly Government may have contributed, at least in part, to the formation of the National Asset Management Group. It's a bit unfortunate that this group has not fully engaged with CLAW but some work streams/networking is starting to emerge which will bring this back in kilter.

I am delighted that even with budget constraints that our training events with IPF property can continue. Which may well open up the possibility of closer working with colleagues in APSE.

### ***Mark Taylor***

Convenor, Asset Management Group

Cwblhawyd adroddiad Swyddfa Archwilio Cymru ar Reoli Adeiladu a thybiwyd yn gyffredinol ei fod yn adroddiad llawer mwy crwn a defnyddiol na'r adroddiad cyfatebol yn Lloegr. Nid yw hyn yn golygu na fu peth trafodaeth ar lefel awdurdod lleol am gysondeb a lefel dealltwriaeth pwnc rhai Archwilywyr.

Yn gyffredinol dengys yr adroddiad daith o welliant, er y bu'r cynnydd yn gymharol gynnil, gyda'r rhan fwyaf â Chynlluniau Rheoli Asedau ar waith erbyn hyn ond mae cwestiynau'n parhau am ba mor ddwfn y cafodd Rheolaeth Asedau ei ymwreiddio yn y broses cynllunio busnes.

Yn sicr gall adborth ar ddiffyg ffocws posibl o safbwynt strategol gan Lywodraeth Cynulliad Cymru fod wedi cyfrannu, o leiaf yn rhannol, at ffurfio'r Grŵp Rheoli Asedau Cenedlaethol. Mae ychydig yn anffodus nad yw'r grŵp wedi ymrwymo'n llawn gyda CLAW ond mae peth ffrydiau gwaith/rhwydweithio yn dechrau yn dod i'r amlwg fydd yn dod â hyn yn ôl i drefn.

Rwy'n hynod falch, hyd yn oed gyda chyfyngiadau ar y gyllideb, y gall ein digwyddiadau hyfforddiant gydag eiddo IPF barhau a all agor y posibilrwydd o gydweithio agos gyda chydweithwyr yn APSE.

### ***Mark Taylor***

Cynullydd, Grŵp Rheoli Asedau

## CLAW Estates and Land Management Group

During 2009/10 the CLAW / ACES Property and Estates Group (CAPE) has continued to concentrate on mixing meetings with continuing professional development / seminars. This has provided an interesting mix of topics, where possible hosted by other organisations. We have also sought to continue the consolidation of the group's membership including encouraging attendance from non-Council estates professionals who qualify for ACES membership, including the Welsh Assembly Government, The Valuation Office, Health Authorities, Police and Fire & Rescue. Meetings have been held in various locations to introduce site visits and encourage members from different regions in Wales to join the Group on a regular basis.

### Town Centre Development

Our Autumn 2009 meeting was hosted by Carmarthenshire County Council and included a site visit and a series of interesting presentations by Simons Group, developers of the new St Catherine's Walk development. The scheme includes a new Debenhams store, 6-screen multiplex cinema, 900-space car park and a range of other shops and restaurants. The town's provisions market was also given a new home with a striking new landmark building.

### ACES AGM and Luncheon

In November, or sister organisation, ACES, held its AGM and luncheon in the Wales Millennium Centre, Cardiff. We were fortunate to welcome Carwyn Jones AM, just prior to his selection as First Minister, to join us in welcoming to Wales surveyors and property managers from around the UK

### RICS Wales

Our spring meeting was kindly hosted by the Royal Institution of Chartered Surveyors in Cardiff. We have continued to develop strong links with the Institution, and were grateful for their hospitality and the opportunity to hear more about RICS services in Wales.

### Llanelli

Carmarthenshire was proud to host CLAW's Spring Meeting in Llanelli. Visits were arranged to a variety of regeneration projects in the area including the Motor Racing Circuit at Pembrey and 2 new sporting venues: the new rugby stadium at Parc y Scarlets, Pemberton and the new horse racing and conference centre at Ffos Las, Trimsaran

### Monmouth

The Group welcomed Bob Perry, National President of ACES on his visit to Wales at its summer meeting. CAPE continues to play an active role in ACES and benefits from the linkage with colleagues from across

## Grŵp Rheoli Stadau a Thir CLAW

Yn ystod 2009/10 mae CAPE, sef Grŵp Eiddo ac Ystadau CLAW/ACES, wedi parhau i ganolbwyntio ar gynnal cymysgedd o gyfarfodydd a datblygiad proffesiynol parhaus/seminarau. Mae hyn wedi rhoi bod i amrywiaeth diddorol o bynciau, a lle bo'n bosibl, cânt eu cynnal gan sefydliadau eraill. Rydym wedi ceisio parhau hefyd i gryfhau aelodaeth y grŵp, gan gynnwys annog gweithwyr proffesiynol sy'n gweithio ym maes ystadau ond nad ydynt yn cael eu cyflogi gan y Cyngor i ddod i'r cyfarfodydd, sef gweithwyr sy'n gymwys i fod yn aelodau o Gymdeithas Prif Syrffewyr Ystadau a Rheolwyr Eiddo yn y Sector Cyhoeddus (ACES), gan gynnwys Llywodraeth Cynulliad Cymru, y Swyddfa Brisio, Awdurdodau Iechyd, yr Heddlu a'r Gwasanaethau Tân ac Achub. Mae cyfarfodydd wedi cael eu cynnal mewn amrywiol leoedd i gyflwyno ymweliadau safle ac i annog aelodau o wahanol ranbarthau yng Nghymru i ymuno â'r Grŵp yn rheolaidd.

### Datblygu Canol Tref

Cafodd ein cyfarfod yn hydref 2009 ei gynnal gan Gyngor Sir Caerfyrddin, ac roedd yn cynnwys ymweliad safle a chyfres o gyflwyniadau diddorol gan Simons Group, sef datblygwyr Rhodfa'r Santes Catrin (datblygiad newydd yng nghanol Caerfyrddin). Mae'r cynllun yn cynnwys siop Debenhams newydd, sinema 6 sgrîn, maes parcio â lle i 900 o gerbydau, ac amrywiaeth o siopau a bwytai eraill. Hefyd mae marchnad nwyddau'r dref wedi cael cartref newydd, a hynny mewn adeilad newydd trawiadol ei bensaerniaeth.

### Cinio a Chyfarfod Cyffredinol Blynnyddol ACES

Ym mis Tachwedd bu i ACES, ein chwaer-fudiad, gynnal ei ginio a'i gyfarfod cyffredinol blynnyddol yng Nghanolfan y Mileniwm, Caerdydd. Roeddem yn ffodus o gael cwmni Carwyn Jones AC, a hynny rhyw ychydig cyn ei benodiad yn Brif Weinidog Cymru, wrth inni groesawu i Gymru syrffewyr a rheolwyr eiddo o bob cwr o'r Deyrnas Unedig.

### Sefydliad Brenhinol y Syrffewyr Siartredig (RICS) - Cymru

Cafodd ein cyfarfod yn y gwanwyn ei gynnal drwy garedigrwydd Sefydliad Brenhinol y Syrffewyr Siartredig yng Nghaerdydd. Rydym wedi parhau i ddatblygu cysylltiadau cryf â'r sefydliad hwn, ac roeddem yn gwerthfawrogi'r croeso a'r cyfle i glywed rhagor am ei wasanaethau yng Nghymru.

### Llanelli

Roedd Sir Gaerfyrddin yn falch o gael cynnal cyfarfod gwanwyn CLAW yn Llanelli. Trefnwyd ymweliadau ag amrywiaeth o brosiectau adfywio yn yr ardal gan gynnwys y Cwrs Rasio Moduron ym Mhen-bre a dau safle newydd ym myd y campau, sef stadiwm rygbi

## CLAW Estates and Land Management Group

the UK. The Group visited the newly refurbished Shire Hall in Monmouth, which was nearing completion.

### Welsh Assembly Government

The Group is pleased to be forging strong links with colleagues from the Welsh Assembly Government, who now regularly join us at our meetings. It is hoped that the roll-out of the Electronic Property Information and Mapping system (e-PIMS) to all public sector bodies in Wales will encourage greater collaboration and sharing of property data (and properties) between organisations. The Group has also contributed to the National Assembly's Rural Development Subcommittee review of local authority farms.

### CLAW Housing Research Projects

The Group has commissioned two research studies on behalf of CLAW; both involve studies into housing valuation methodology. Councils have for many years adopted varying methods of valuing council houses and the first report will examine these approaches and make recommendations on the best method to adopt in Wales. It is hoped that this document will then become standard valuation practice in Wales. The second report will review the valuation of land for affordable housing and the different residual and other valuation approaches used for planning agreements and transactions.

### Secretary & Treasurer

Despite nearly fully retiring from CLAW roles, Nigel Baldwin from Powys has been persuaded to maintain his role as Treasurer of the Group – we are grateful to Nigel for providing this continuity. Gerry Devine from Cardiff is now Secretary. Thanks to both for their continuing support for the Group

### *Jonathan Fearn*

Chair of CAPE

Convenor, CLAW Estates & Land Management Group  
Chair, Association of Chief Estates Surveyors in the  
Public Sector (ACES) Welsh Branch

## Grŵp Rheoli Stadau a Thir CLAW

newydd Parc y Scarlets, Pemberton, a'r ganolfan rasys ceffylau a chynadledda newydd yn Ffos Las, Trimsaran.

### Mynwy

Yn ei gyfarfod yn yr haf bu i'r Grŵp groesawu Bob Perry, Llywydd Cenedlaethol ACES, i Gymru. Mae CAPE yn dal i chwarae rhan weithgar yn ACES ac yn cael budd o'r cysylltiadau â chydweithwyr ledled y Deyrnas Unedig. Ymwelodd y Grŵp â'r Neuadd Sirol ym Mynwy, lle roedd y gwaith o'i hadnewyddu bron â'i gwblhau.

### Llywodraeth Cynulliad Cymru

Mae'r Grŵp yn falch ei fod yn meithrin cysylltiadau cryf â chydweithwyr o Lywodraeth Cynulliad Cymru, sydd bellach yn ymuno â ni yn ein cyfarfodydd yn rheolaidd. Y gobaith yw y bydd ymestyn y system Mapio a Gwybodaeth Eiddo electronig (e-PIMS) i bob corff cyhoeddus yng Nghymru yn annog sefydliadau i gydweithio rhagor ac i rannu rhagor o ddata am eiddo, ynghyd â rhannu eiddo. Yn ogystal, mae'r Grŵp wedi cyfrannu at adolygiad Is-bwyllgor Datblygu Gwledig Llywodraeth Cynulliad Cymru o ffermydd awdurdodau lleol.

### Prosiectau Ymchwil Tai CLAW

Mae'r Grŵp wedi comisiynu dwy astudiaeth ymchwil ar ran CLAW, ac mae'r ddwy yn ymwneud ag astudiaethau i fethodoleg prisio tai. Ers blynyddoedd lawer mae cynghorau wedi bod yn mabwysiadu dulliau amrywiol o brisio tai cyngor, a bydd yr adroddiad cyntaf yn rhoi sylw i'r dulliau hyn ac yn gwneud argymhellion ynghylch y dull gorau i'w fabwysiadu yng Nghymru. Y gobaith yw y bydd y ddogfen hon yn cael ei defnyddio wedyn fel yr arfer prisio safonol yng Nghymru. Bydd yr ail adroddiad yn adolygu prisio tir at ddibenion tai fforddiadwy, ynghyd â gweddill y dulliau prisio a ddefnyddir ar gyfer prynu a gwerthu a chytundebau cynllunio.

### Yr Ysgrifennydd a'r Trysorydd

Er ei fod bron ag ymddeol yn llwyr o'i ddyletswyddau gyda CLAW, llwyddwyd i ddwyn perswâd ar Nigel Baldwin o Bowys i barhau fel Trysorydd y Grŵp, ac rydym yn ddiolchgar i Nigel am wneud hynny. Gerry Devine o Gaerdydd yw'r Ysgrifennydd erbyn hyn. Diolch i'r ddau am eu cefnogaeth barhaus i'r Grŵp.

### *Jonathan Fearn,*

Cadeirydd CAPE

Cynllunydd, CLAW Grŵp Rheoli Ystadau A Thir  
Cadeirydd Cangen Cymru o Gymdeithas Prif Syrffewyr  
Ystadau a Rheolwyr Eiddo yn y Sector Cyhoeddus  
(ACES)

## CLAW Mechanical & Electrical Group

The Group has again experienced a good level of attendance during the year and received a number of presentations during the Group meetings. Presentations on new Technology and changes in Legislation were given by Speakers from various companies and organisations chosen by the Group members.

The following presentations took place in conjunction with the Group meetings:-

1. September 9th 2009 - Presentation by James McNamara on behalf of Geothermal Systems on the company's facilities and expertise in this area and various types of systems, benefits and legislative drivers, etc
2. December 11th 2009 - Presentation by Chris Doherty on behalf of Oventrop Valves on differential pressure control and its benefits, types of variable volume systems, dynamic balancing, regulated TRVs and DHW legionella control.
3. February 24th 2010 - Presentation by Andrew Marchant, Regional Manager, on behalf of the HVCA and included benefits of membership and of specifying HVCA registered contractors and the role they undertake in the Safety of the industry via CHAS.
4. April 14th 2010 - Presentation on behalf of Collcom Ltd regarding Fire Risk Assessments, the current Fire Regulations and Risk Management.
5. June 8th 2010 - Presentation on behalf of Marshall Tufflex by David Hall, Jonathon Davey and Jeremy Dodge. The topics were VOLTIS - Intelligent Voltage Optimisation and IPSIS - Integrated system for measurement, controls and energy saving.

The Group submitted an application for finance to the Steering Group this Session for the update of 50% of the Maintenance Modules and Electrical Design Guide and the Lift Design Guide by Marald Engineering. This application was approved and Marald have provided a list of the modules and specifications with phased completion dates so that the Group members have an opportunity to review their submissions before they are placed on the CLAW website for general circulation.

The Sprinkler Protection Document is also due for upgrading and this is being financed via another source in conjunction with Ceredigion Council.

The Group has decided on additional modules it wishes to add to the portfolio and these will be subject to a separate finance application.

In summary, the Group continues to receive the enthusiastic support of local authority Mechanical and Electrical Engineers and we actively review both our Specifications which are regularly used and arrange presentations to ensure their validity.

**Mike Hughes**

Chairman, Mechanical and Electrical Group

## Cylch Peirianwyr a Thrydanwyr CLAW

Mae'r Grŵp unwaith eto wedi cael presenoldeb da ar hyd y flwyddyn, a derbyniwyd sawl cyflwyniad yng nghyfarfodydd y Grŵp. Bu i aelodau'r Grŵp ddethol siaradwyr o wahanol gwmnïau a mudiadau i roi cyflwyniadau ar Dechnoleg newydd a Newidiadau Deddfwriaethol.

Rhoddwyd y cyflwyniadau canlynol yn ystod cyfarfodydd y Grŵp:-

1. Medi 9 2009 - Cyflwyniad gan James McNamara ar ran Geothermal Systems yn sôn am gyfleusterau'r cwmni a'u harbenigedd yn y maes, gan gyfeirio at yr amrywiaeth o systemau, buddion, sbardunau deddfwriaethol ac yn y blaen.
2. Rhagfyr 11 2009 - Cyflwyniad gan Chris Doherty ar ran Oventrop Valves yn sôn am reoli gwasgedd differol a buddion hynny, mathau o systemau cyfaint newidiol, cydbwysio dynamig, falfiau rheidiadur thermostatig wedi'u rheoleiddio, a rheoli clefyd y llengfilwyr mewn cyflenwadau dw'r poeth domestig.
3. Chwefror 24 2010 - Cyflwyniad gan Andrew Marchant, Rheolwr Rhanbarthol, ar ran Cymdeithas y Contractwyr Gwresogi ac Awyru (HVCA) a oedd yn sôn am fuddion ymaelodi â'r Gymdeithas, ac yn rhoi manylion ynglŷn â chontractwyr sydd wedi cofrestru â'r HVCA, a swyddogaeth y Gymdeithas o ran Diogelwch y diwydiant drwy'r Cynllun Aseu Iechyd a Diogelwch i Gontractwyr.
4. Ebrill 14 2010 - Cyflwyniad ar ran Collcom Cyf yn sôn am Aseidiadau Perygl Tân, y Rheoliadau Tân cyfredol a Rheoli Risg.
5. Mehefin 8 2010 - Cyflwyniad ar ran Marshall Tufflex gan David Hall, Jonathon Davey a Jeremy Dodge. Soniwyd am VOLTIS - Optimeiddio Foltedd yn Ddeallus ac IPSIS - System integredig ar gyfer mesur, rheoli ac arbed ynni.

Yn y Sesiwn hwn bu i'r Grŵp wneud cais am gyllid gan y Grŵp Llywio ar gyfer penodi Marald Engineering i ddiweddar 50% o'r Modiwlau Cynnal a Chadw, y Canllawiau Dylunio Trydanol a'r Canllawiau Dylunio Lifftau. Cymeradwywyd y cais hwnnw, a bu i Marald ddarparu rhestr o'r modiwlau a'r manylebau, ynghyd â dyddiadau cwblhau cyfnodol, er mwyn rhoi cyfle i aelodau'r Grŵp adolygu'r deunydd cyn iddo fynd ar wefan CLAW i bawb ei weld.

Bydd gofyn diweddarau'r Ddogfen Diogelu Drwy System Chwistrellu yn fuan hefyd, a byddwn yn sicrhau cyllid ar gyfer hynny drwy ffynhonnell arall, ar y cyd â Chyngor Sir Ceredigion.

Mae'r Grŵp wedi penderfynu ynghylch y modiwlau eraill y mae'n dymuno eu hychwanegu i'r portffolio, a bydd yn gwneud cais am gyllid ar wahân ar gyfer y rheiny.

Yn gryno, mae'r Grŵp yn parhau i gael cefnogaeth frwd gan Beirianwyr Mecanyddol a Thrydanol yr awdurdodau lleol, ac yn mynd ati i adolygu'r Manylebau safonol y byddwn yn eu defnyddio, ac yn trefnu cyflwyniadau er mwyn sicrhau bod y rheiny'n ddilys.

**Mike Hughes**

Cadeirydd, Grŵp Mecanyddol a Thrydanol

## Constructing Excellence in Wales

Funded by the Welsh Assembly Government, Constructing Excellence in Wales (CEW) champions the merits of best practice and collaborative construction methods. Our target is to make sure the Welsh construction industry continuously improves, learns from its past mistakes and delivers the infrastructure the country's economy requires. That is even more important in a recession as it is easy for people to slip in to bad habits in an attempt to manage finances better. For the construction industry bad habits mean a return to an old fashioned adversarial way of working – contracts tendered on an individual basis, based on price and not in terms of best value and certainly not encouraging an integrated team approach. We believe that is vital that the risks of not procuring construction projects via best value route must be explained and then championed across the industry, but specifically in the public sector.

CEW works alongside CLAW members as a partner and colleague to make sure that best practice is understood embraced and shared by joint events, Demonstration Projects and liaison with industry bodies, local authority decision makers and Welsh Assembly Government Ministers.

Our immediate focus is on waste and sustainability. Construction creates more waste than any other sector of the economy and the built environment is one of the biggest contributors of carbon. In 2010 our waste programme has worked with waste handling organisations to divert waste from landfill and educate construction companies, suppliers, designers, engineers and clients not just how to minimise waste but prevent waste at the outset of a project. CEW has been influential on key projects such as Church Village bypass, Swansea Quadrant Interchange and the Airbus North Factory project in the way waste has been managed. Low/zero carbon is high on the Government agenda and CEW has been central to the creation and focus of the new Low/Zero carbon Hub and CEW will be responsible for it going into 2011. This will mean closer liaison with all the key built environment groups across Government, public sector and the supply chains to ensure new build projects meet the Government's tough carbon targets and that refurbishment work serves to improve the energy performance of buildings.

Over the past ten years or so, our work has shown that a collaborative procurement method delivers great projects safely, often within tight financial constraints and sustainably too. Perhaps more importantly, our work has shown that the only way the Government targets on waste and sustainability will be reached is through an integrated team approach. Not only can we build a better Wales using less carbon, but the process will minimise waste, use more recycled materials and create an energy efficient society as well. Plus the construction sector itself will be able to grow and emerge from the recession stronger and ready to deliver if it adheres to a collaborative business model. Local government has a major role to play in making this happen which is why CEW is committed to supporting and working

## Adeiladu Arbenigrwydd yng Nghymru

Wedi ei gyllido gan Lywodraeth Cynulliad Cymru, mae Adeiladu Arbenigrwydd yng Nghymru yn hyrwyddo arfer gorau a dulliau o adeiladu cydweithredol. Ein targed yw sicrhau fod y diwydiant adeiladu yng Nghymru yn gwella yn barhaus, yn dysgu o gamgymeriadau'r gorffennol ac yn cyflwyno'r isadeiledd sydd ar yr economi ei hangen. Mae hyn hyd yn oed yn bwysicach mewn dirwasgiad gan ei bod hi'n haws i bobl fabwysiadu arferion gwael wrth geisio rheoli cyllidebau yn well. Mae arferion gwael i'r diwydiant adeiladu yn golygu dychwelyd at ddull hen ffasiwn, andwyol o weithio - tendro contractau yn unigol, ar sail pris ac nid ar sail gwerth gorau ac yn sicr drwy beidio ag annog gweithio mewn tîm. Credwn ei bod hi'n hanfodol esbonio'r risg o beidio â chaffael prosiectau adeiladu drwy werth gorau a'n bod yn ei hyrwyddo ar draws y diwydiant, ac yn arbennig felly yn y sector gyhoeddus.

Mae Adeiladu Arbenigrwydd yng Nghymru yn gweithio gydag aelodau CLAW fel partner a chydweithiwr er mwyn sicrhau bod arfer dda yn cael ei ddeall, ei groesawi a'i rannu gan ddigwyddiadau ar y cyd, Prosiectau Arddangos a chydgyssylltiad gyda chyrrff diwydiannol, gwneuthurwyr penderfyniadau awdurdodau lleol a Gweinidogion Llywodraeth Cynulliad Cymru.

Mae ein ffocws ar hyn o bryd ar wastraff a chynladwyedd. Mae adeiladu yn creu mwy o wastraff nac unrhyw sector o'r economi ac mae'r amgylchedd adeiledig yn un o'r cyfranwyr carbon mwyaf. Yn 2010 mae ein rhaglen wastraff wedi gweithio gyda sefydliadau trin gwastraff er mwyn gwyrhoeddi gwastraff o safleoedd mewnlenwi ac addysgu cwmnïau adeiladu, cyflenwyr, cynllunwyr, peirianwyr a chleientiaid nid yn unig sut i leihau gwastraff ond i atal gwastraff ar ddechrau prosiect. Bu Adeiladu Arbenigrwydd yng Nghymru yn ddylanwadol gyda phrosiectau allweddol megis ffordd Church Village bypass, Swansea Quadrant Interchange a'r prosiect Airbus North Factory yn y modd y rheolwyd gwastraff. Mae Carbon isel/dim carbon yn uchel ar agenda'r Llywodraeth a bydd Adeiladu Arbenigrwydd yng Nghymru yn gyfrifol am ei barhad i 2011. Bydd hyn yn golygu cydgyssylltu yn agosach gyda phob grŵp amgylchedd adeiledig allweddol yn y Llywodraeth, sector cyhoeddus a'r cadwyni cyflenwi er mwyn sicrhau fod prosiectau adeiladu newydd yn cwrdd â thargedau carbon uchel y Llywodraeth a bod y gwaith adnewyddu yn gwella perfformiad ynni adeiladau.

Yn ystod y deng mlynedd diwethaf dangoswyd drwy ein gwaith bod caffael ar y cyd yn golygu prosiectau mawr yn cael eu cyflwyno yn ddiogel, yn fynych gyda chyfyngiadau ariannol a chynladwyedd tynn. Efallai yn bwysicach, dangosodd ein gwaith mai'r unig ffordd i gwrdd â thargedau'r Llywodraeth ar wastraff a chynladwyedd yw drwy weithio mewn tîm. Nid yn unig y medrwn adeiladu gwell Cymru gan ddefnyddio llai o garbon, ond bydd y broses yn lleihau gwastraff, defnyddio mwy o ddefnyddiau wedi eu hailgylchu gan greu cymdeithas sydd yn effeithlon o ran ynni hefyd. Yn ogystal bydd y sector adeiladu hefyd yn medru tyfu a dod allan o'r dirwasgiad yn gryfach ac yn barod i ddarparu, os cedwir at fodel busnes o gydweithio. Mae gan lywodraeth leol ran bwysig i'w chwarae er mwyn gwneud i hyn ddigwydd a dyma pam mae Adeiladu

## Constructing Excellence in Wales

alongside CLAW and its members. CEW has direct links to Government, key advisors and talks on a one-to-one basis with Ministers regularly. Most importantly, it is the only organisation of its kind that has an over view of the different disciplines and organisations comprising the construction supply chain in Wales.

### **Milica Kitson**

Chief Executive,  
Constructing Excellence in Wales

## Adeiladu Arbenigrwydd yng Nghymru

Arbenigrwydd yng Nghymru wedi ymrwymo i gefnogi a gweithio gyda CLAW a'i aelodau. Mae gan Adeiladu Arbenigrwydd yng Nghymru gysylltiadau uniongyrchol â'r Llywodraeth, ymgynghorwyr allweddol ac mae'n siarad un wrth un gyda Gweinidogion yn rheolaidd. Yn bwysig iawn, dyma'r unig sefydliad o'i fath sydd â golwg gyffredinol o'r gwahanol ddisgyblaethau a sefydliadau sydd yn cynnwys cadwyn cyflenwi'r busnes adeiladu yng Nghymru.

### **Milica Kitson**

Prif Weithredwraig,  
Adeiladu Arbenigrwydd yng Nghymru

## Value Wales

### How a SQuID Can Help Break Down Barriers to Procurement

Value Wales commissioned the Universities of Glamorgan and Bangor to undertake research to identify potential issues that prevented small to medium enterprises (SMEs) accessing public sector contract opportunities in Wales. The Breaking Down Barriers research project was concluded in mid-2009 and, amongst others, contained specific recommendations calling for greater standardisation of pre-qualification processes.

Pre-qualification and supplier selection is an incredibly important part of the procurement process; not only is this now emphasised from a legislative perspective with the Remedies Directive taking effect in late 2009, but also, if we don't get it right, we could end up awarding contracts to the wrong businesses that jeopardise our ability to deliver high quality, cost effective projects on time.

It would be easy to think that, as a collective public sector team across Wales, we should be all be working to a standard process to select suppliers and contractors. Historically, though, it's not been quite so straightforward and this has created a major barrier that has prevented smaller, indigenous businesses accessing our contract opportunities in the public sector.

However, we're now making huge progress in developing the Supplier Qualification Information System (SQuID) to overcome the issues that have been historically experienced with pre-qualification. It's vitally important that this system is adopted across the public sector in Wales and I'm really pleased that CLAW is represented by Jane Wade of Vale of Glamorgan on the SQuID project board, which also comprises representation from all other sectors.

Co-production has been key to the production of SQuID and the input from CLAW members was a very important contribution during the consultation process.

SQuID has been developed on the principle that all qualification requirements will be determined through a

## Gwerth Cymru

### Sut y gall SquID Helpu i Ddileu Rhwystrau Caffael

Comisiynodd Gwerth Cymru Brifysgolion Morgannwg a Bangor i ymchwilio i'r rhesymau pam nad oedd busnesau bychain a chanolig yn ennill contractau'r sector cyhoeddus yng Nghymru. Gorffennwyd y prosiect ymchwil Breaking Down Barriers yng nghanol 2009 ac ymysg eraill, ni chynhwyswyd argymhellion penodol yn gofyn am ragor o safoni prosesau cyn-gymhwysu.

Mae cyn-gymhwysu a dewis cyflenwyr yn rhan hynod bwysig o'r broses caffael; nid yn unig y mae hyn yn awr yn cael ei bwysleisio o safbwynt deddfwriaethol gyda'r Cyfarwydddeb Unioni Cam sydd yn dod i rym ar ddiwedd 2009, ond hefyd os na fyddwn yn cael hyn yn iawn byddwn yn rhoi cytundebau i'r busnesau anghywir sydd yn cyflwyno prosiectau cost effeithiol o ansawdd uchel ar amser.

Byddai'n hawdd meddwl, fel tîm ar y cyd i'r sector cyhoeddus drwy Gymru, y dylem i gyd weithio tuag at broses safonol o ddewis cyflenwyr a chontractwyr. Yn hanesyddol nid yw wedi bod mor syml â hyn, ac mae hyn wedi creu rhwystr mawr a oedd wedi atal busnesau llai, brodorol rhag ennill contractau yn y sector gyhoeddus.

Fodd bynnag, yr ydym yn awr yn gwneud cynnydd aruthrol yn datblygu'r System Gwybodaeth Gymhwysu i Gyflenwyr (SQuID) er mwyn delio â'r materion sydd â phrofiad yn hanesyddol o gyn-gymhwysu. Mae'n hynod bwysig bod y system hon yn cael ei mabwysiadu ar draws y sector gyhoeddus yng Nghymru ac yr wyf yn hynod falch fod CLAW yn cael ei gynrychioli gan Jane Wade o Fro Morgannwg ar frwdd prosiect SquID, sydd hefyd yn cynnwys sylwadau o bob sector arall.

Bu cyd-gynhyrchu yn allweddol wrth lunio SQuID a bu cyfraniad aelodau CLAW yn bwysig iawn yn ystod y broses ymgynghori.

Datblygwyd SquID ar yr egwyddor y bydd pob gofyniad cymhwysu yn cael ei benderfynu drwy broses asesu risg

## Value Wales

process of risk assessment so that they are proportionate to the procurement in question. Supplemented by additional advance information about the procurement, this will make the process much more transparent and will enable prospective bidders to make early, informed decisions as to whether to pursue an interest in the procurement.

The SQuID question set has been trialled as the basis of pre-qualification questionnaires (PQQs) on a number of Local Government projects, including Cowbridge School, the South East Wales contractor framework and the North Wales minor works procurement.

The National Procurement Website, buy4wales/sell2wales, is undergoing a rebuild which is due for completion at the end of this financial year. Suppliers will be able to upload their profile on a once only basis, based on the SQuID question catalogue. This means that they won't need to re-submit their data each and every time that they wish to participate in a procurement. It's suggested that the cost of preparing a PQQ can range from between £6k to £15k, so use of SQuID will really help eliminate waste from the process.

Training workshops on the use of SQuID will be held in the latter part of 2010 and early 2011, with a number of days focussing purely on construction. I hope that all CLAW member authorities will be able to nominate representatives to come along to these workshops.

The collective approach that has made this project a success so far is further evidence of our appetite across Wales to collaborate. No doubt, collaboration will be fundamental as we move into uncertain financial times; I'm looking forward to continuing to work with CLAW to progress the SQuID and taking up opportunities to rise to the challenge of managing with less.

*Nick Sullivan*  
Value Wales

## Gwerth Cymru

fel eu bod yn gymesur â'r caffael dan sylw. Bydd hyn yn gwneud y broses yn llawer mwy tryloyw a bydd yn galluogi darpar gynigwyr i wneud penderfyniadau buan a gwybodus a ydynt am ddangos diddordeb yn y caffael.

Cafodd cwestiwn SQuID ei dreialu fel sail holiaduron cyn-gymhwyso ar nifer o brosiectau Llywodraeth Leol, gan gynnwys Ysgol y Bontfaen, fframwaith contractwyr De Ddwyrain Cymru a chaffael mân weithiau Gogledd Cymru.

Mae'r Wefan Caffael Genedlaethol, buy4wales/sell2wales, yn cael ei hadnewyddu ac y mae i'w chwblhau ar ddiwedd y flwyddyn ariannol. Bydd cyflenwyr yn llwytho eu proffil ar ddiwedd y flwyddyn ariannol unwaith yn unig, yn seiliedig ar gatalog cwestiynau SQuID/ Mae hyn yn golygu na fydd arnynt angen ailgyflwyno eu data bob tro y dymunant gymryd rhan mewn caffael. Awgrymwyd fod cost paratoi Holiaduron Cyn-gymhwyso yn medru amrywio o £6k i £15k, felly gall y defnydd o SQuID helpu i leihau gwastraff o'r broses.

Cynhelir gweithdai hyfforddi ar y defnydd o SQuID yn rhan olaf rhan 2010 a dechrau 2011, gyda nifer o ddiwrnodau yn canolbwyntio ar adeiladu. Gobeithio y bydd pob aelod o awdurdodau CLAW yn medru enwebu cynrychiolwyr i ddod i'r gweithdai hyn.

Roedd y dull hwn o gydweithio ar y prosiect yn llwyddiant cyn belled ag y bo rhagor o dystiolaeth o'n hawydd ar draws Cymru i gydweithio. Nid oes amheuaeth y bydd cydweithio sylfaenol wrth i ni symud i amserau mwy ansicr yn ariannol; edrychaf ymlaen at weithio gyda CLAW i fwrw ymlaen gyda SQuID a manteisio ar y cyfle i gwrdd â'r her o wneud y tro gyda llai.

*Nick Sullivan*  
Gwerth Cymru

## Welsh Local Government Association

### 'Building Collaboration'

The construction industry has long been recognised as both an indicator of the condition of the economy, and as a potential medium for stimulating economic regeneration.

Historically the largest expenditure area for local authority procurement, expenditure has contributed to the provision of numerous new building projects, refurbishments and the maintenance of existing assets. However, reports from the Wales Audit Office and the development of the 21st Century Schools Programme have reflected the widespread concern that funding has fallen short of requirements to maintain current levels

## Cymdeithas Llywodraeth Leol Cymru

### 'Adeiladu Cydweithrediad'

Mae'r diwydiant adeiladu wedi cael ei gydnabod ers cryn amser fel dangosydd cyflwr yr economi, ac fel cyfrwng posibl ar gyfer ysgogi adfywiad economaidd.

Yn hanesyddol, mae'r maes gwariant mwyaf ar gyfer caffaeliad awdurdod lleol wedi cyfrannu at ddarparu llawer o brosiectau adeiladu newydd, adnewyddu a chynnal a chadw asedau presennol. Fodd bynnag, mae adroddiadau gan Swyddfa Archwilio Cymru a datblygiad y Rhaglen Ysgolion ar gyfer y 21ain Ganrif wedi dangos y pryder eang bod y cyllid wedi bod yn llai na'r galw i gynnal lefelau cyfredol gwasanaethau i'r cyhoedd ac i wella gwasanaethau ar gyfer y dyfodol.

## Welsh Local Government Association

of services to the public and to improve services for the future.

Added to this, budget cuts likely to significantly affect Welsh local authority construction expenditure, potentially by up to 3% on revenue and 10% on capital received via WAG funding, have resulted in an obvious need to make the best of the diminishing resources in construction and 'deliver more for less'.

To this end, the Welsh Local Government Association has established the Collaborative Works Group. Initially set up in response to the development of the 21st Century Schools Programme, the group will focus much of its early activity around this area and will aim to support collaborative opportunities across the four local authority regions by

- Identifying and facilitating opportunities for collaboration on property, construction and procurement related delivery solutions, promoting standardisation and avoiding duplication
- Encouraging innovation, sustainability, the application of best practice and working across professional and regional boundaries in order to achieve the best outcomes.

The Collaborative Works Group will be carefully aligned with the direction and priorities of its constituent local authorities and their Regional Partnership Boards and rather than determining strategy, the aim of the group will be to improve delivery and optimise the use of available resources.

Reflecting the need for the group to be multi disciplinary, the membership of the group is made up of local authority officers with the addition of key stakeholders from:

- Construction Excellence Wales
- CLAW (Consortium of Local Authorities in Wales)
- WLGA – 21st Century Schools Programme
- WLGA Efficiency and Procurement Team
- North Wales Procurement Partnership
- Welsh Purchasing Consortium
- Welsh Assembly Government – Value Wales

Having held its initial meeting on 6th July 2010, the group has already, through the simple sharing of information, influenced the use of resources in a potential consultancy services arrangement, which will avoid resource draining duplication which is helpful to both client and supplier sides.

The group are now considering their forward programme outlining its proposed activity and priorities.

*Chris Chapman,*  
Programme Manager, Welsh Local Government  
Association

## Cymdeithas Llywodraeth Leol Cymru

Yn ogystal â hyn, mae toriadau mewn cyllidebau sy'n debygol o effeithio'n sylweddol ar wariant adeiladu awdurdodau lleol Cymru, hyd at 3% ar refeniw a 10% ar gyfalaf a dderbyniwyd trwy gyllid LICC o bosibl, wedi arwain at angen amlwg i wneud y gorau o'r adnoddau adeiladu sy'n lleihau a 'chylwyno mwy am lai'.

I'r perwyl hwn, mae Cymdeithas Llywodraeth Leol Cymru wedi sefydlu'r Gweithgor Cydweithredol. Fe'i sefydlwyd yn wreiddiol mewn ymateb i ddatblygu'r Rhaglen Ysgolion ar gyfer yr 21ain Ganrif, a bydd y grŵp yn canolbwyntio llawer o'i weithgaredd cynnar ar y maes hwn ac yn ceisio cefnogi cyfleoedd cydweithredol ar draws y pedwar awdurdod lleol trwy

- Nodi a hwyluso cyfleoedd i gydweithredu ar eiddo, adeiladu ac atebion cyflwyno'n ymwneud â chaffael, hyrwyddo safoni ac osgoi dyblygu.
- Annog arloesi, cynaliadwyedd, cymhwyso arfer gorau a gweithio ar draws ffiniau proffesiynol a rhanbarthol er mwyn cyflawni'r canlyniadau gorau.

Caiff y Gweithgor Cydweithredol ei wneud yn gydnaws â chyfeiriad a blaenoriaethau ei awdurdodau lleol a'u Byrddau Partneriaeth Rhanbarthol ac yn hytrach na phennu strategaeth, nod y grŵp fydd gwella cyflwyno a gwneud y defnydd gorau o'r adnoddau sydd ar gael.

Gan adlewyrchu angen y grŵp i fod yn amlddisgyblaethol, mae aelodaeth y grŵp yn cynnwys swyddogion awdurdod lleol yn ogystal â rhanddeiliaid allweddol o:

- Ragoriaeth Adeiladu Cymru
- CLAW (Consortiwm Awdurdodau Lleol Cymru)
- CLILC – Rhaglen Ysgolion ar gyfer y 21ain Ganrif
- Tîm Effeithlonrwydd a Chaffael CLILC
- Partneriaeth Caffael Gogledd Cymru
- Consortiwm Prynu Cymru
- Llywodraeth Cynulliad Cymru – Gwerth Cymru

Having held its initial meeting on 6th July 2010, tAr ôl cynnal ei gyfarfod cychwynnol ar 6 Gorffennaf 2010, mae'r grŵp eisoes, trwy rhannu gwybodaeth, wedi dylanwadu ar ddefnyddio adnoddau mewn trefniant gwasanaethau ymgynghorol posibl, a fydd yn osgoi dyblygu adnoddau, sydd yn ddefnyddiol i gleientiaid a chyflenwyr.

Mae'r grŵp bellach yn ystyried ei flaenraglen yn amlinellu ei weithgareddau arfaethedig a'i flaenoriaethau.

*Chris Chapman,*  
Rheolwr Rhaglen, Cymdeithas Llywodraeth Leol Cymru

## Building of the Year Award 2010 and Sustainability Award 2010

These prestigious awards raise awareness of the importance of quality in the design of public buildings in Wales and of sustainability in public property management. The financial squeeze on local authority spending resulted in fewer schemes being submitted for the 2010 awards but these were of a high standard. The judges had a particularly challenging time assessing the sustainability award submissions because the new buildings commissioned by Local Authorities in Wales were of the highest sustainable construction standards reflecting the initiatives promoted by the Welsh Assembly Government.

Entries for the 2010 Building of the Year Award included a number of major refurbishment schemes as well as new building projects. These refurbishment projects demonstrated that through good design Local Authorities were improving their property stock in a sustainable way to make service delivery improvements.

The judges commented that they thought the new buildings constructed by Local Authorities in Wales were now leading the way by incorporating sustainability in the early stages of design. There was a holistic approach to the designs with sustainability at the early conceptual stage and it was good to see that virtually all new schools in Wales are now reaching the BREEAM Excellent standard.

The entries for the Sustainability Awards this year were also of the highest standard and it was good to see that a variety of new technologies had been incorporated into the projects submitted.

The 2010 Building of the Year Award was won by Cardiff Council's entry the "New Cardiff Central Library". The judges considered that the design made a significant contribution to the public realm in the centre of the city. It was a finely detailed scheme with internal spaces working well and incorporating a great deal of natural light. The project also demonstrated that by implementing the principles of sustainable design from the early stages – inherently sustainable design rather than 'bolt-on' – the team was able to deliver an 'Excellent' building for minimal cost.

A Commendation Award was given to Torfaen County Borough Council's "LIFE Station – Trefethin, Pontypool". The judges awarded this commendation award in recognition of the aspirations of the brief and excellent design solution. The judges were particularly pleased to see the effective use of timber in the design and the high sustainability standards achieved.

The 2010 Sustainability Award was won by Ceredigion County Council's "Canolfan Rheidol Offices – Renewable Energy Facility, Aberystwyth". This project was an integral part of the new office

## Gwobr Adeilad y Flwyddyn 2010 a Gwobr Cynaliadwyedd 2010

Mae'r gwobrau pwysig hyn yn codi ymwybyddiaeth o bwysigrwydd ansawdd wrth gynllunio adeiladau cyhoeddus yng Nghymru ac o gynaliadwyedd wrth reoli eiddo cyhoeddus. Mae'r wasgfa ariannol ar wariant awdurdod lleol wedi golygu bod llai o gynlluniau yn cael eu cyflwyno ar gyfer gwobrau 2010 ond roedd y rhain o safon uchel. Cafodd y beirniaid amser hynod anodd yn asesu'r rhai a geisiodd am y wobwr cynaliadwyedd oherwydd bod adeiladau newydd a gomisiynwyd gan Awdurdodau Lleol yng Nghymru o'r safonau adeiladu cynaliadwy uchaf a oedd yn adlewyrchu'r cynlluniau a hyrwyddwyd gan Lywodraeth Cynulliad Cymru.

Roedd y cystadleuwyr ar gyfer Gwobr Adeilad y Flwyddyn 2010 yn cynnwys nifer o gynlluniau adnewyddu pwysig yn ogystal â phrosiectau adeiladu newydd. Roedd y prosiectau adnewyddu hyn yn dangos bod Awdurdodau Lleol yn gwella eu stoc eiddo mewn modd cynaliadwy er mwyn cyflwyno gwell gwasanaethau.

Dywedodd y beirniaid eu bod yn credu fod yr adeiladau newydd a adeiladwyd gan Awdurdodau Lleol yng Nghymru yn awr yn arwain y ffordd drwy ymgorffori cynaliadwyedd yng nghamau cynnar y cynllun. Roedd agwedd gyfannol tuag at gynllunio gyda chynaliadwyedd yn dod i mewn o'r cychwyn a da oedd gweld fod ymron pob ysgol newydd yng Nghymru yn awr yn cyrraedd safon Ardderchogrwydd BREEAM.

Roedd y rhai a geisiodd am y Gwobrau Cynaliadwyedd eleni hefyd o'r safon uchaf a da oedd gweld bod nifer o dechnolegau newydd wedi eu hymgorffori yn y prosiectau a gyflwynwyd.

Enillwyd Gwobr Adeilad y Flwyddyn 2010 gan Gyngor Caerdydd am y "Llyfrgell Newydd yng Nghanol Caerdydd". Ystyriai'r beirniaid fod y cynllun wedi gwneud cyfraniad sylweddol i'r ardal gyhoeddus yng nghanol y ddinas. Roedd yn gynllun manwl gywraidd gyda manau mewnol a oedd yn gweithio'n dda ac yn cynnwys llawer iawn o olau naturiol. Mae'r prosiect hefyd yn dangos drwy weithredu egwyddorion cynllun cynaliadwy yn ystod y camau cynnar - cynllun cynaliadwy yn hytrach nag un 'bolt-on' - bod y tîm yn medru darparu adeilad 'Ardderchog' am gyn lleied o gost â phosibl.

Cyflwynwyd Gwobr Clod i Gyngor Bwrdeistref Sir Torfaen am "LIFE Station - Trefethin, Pontypool". Rhoddodd y beirniaid y wobwr clod hon am gydnabod dyheadau'r briff ac am y cynllun ardderchog. Roedd y beirniaid yn hynod falch o weld defnydd effeithiol o bren yn y cynllun a'r safonau cynaliadwyedd uchel a gyrraeddwyd.

Enillwyd Gwobr Cynaliadwyedd 2010 gan "Swyddfeydd Canolfan Rheidol - Cyfleusterau Ynni Adnewyddol, Aberystwyth" Gyngor Sir Ceredigion. Roedd y prosiect hwn yn rhan hanfodol o'r swyddfeydd newydd a adeiladwyd gan Gyngor Sir Ceredigion a Llywodraeth

## Building of the Year Award 2010 and Sustainability Award 2010

buildings constructed by Ceredigion County Council and Welsh Assembly Government. The judges were pleased to see that the scheme develops a sustainable local timber resource in an innovative way through the construction of a major biomass energy station utilising locally grown wood chip.

The judges were also pleased that the standard of entries for the Sustainability Awards was very high with seven new schools all reaching the highest BREEAM standards. It was felt that all were worthy of commendation and to select only one would not be equitable. A Commendation Award was therefore not given and the panel recommended all the Authorities that submitted applications be commended on the sustainability standards achieved in 2010.

The judges for the 2010 awards were:

- **Professor Phil Jones** – Head of the Welsh School of Architecture
- **Mhairi McVicar** – Lecturer at the Welsh School of Architecture
- **Jonathan Vining** – Regional Director WYG Planning & Design
- **Councillor Goronwy Edwards** - Chairman of CLAW – Conwy County Borough Council
- **Keith Morgan** - Chairman of CLAW Board of Nominated Officers - Ceredigion County Council

## Gwobr Adeilad y Flwyddyn 2010 a Gwobr Cynaliadwyedd 2010

Cynulliad Cymru. Roedd y beirniaid yn falch gweld bod y cynllun wedi datblygu cyfleuster pren lleol cynaliadwy mewn modd arloesol drwy adeiladu gorsaf biomass sylweddol gan ddefnyddio sglodion coed a dyfwyd yn lleol.

Roedd y beirniaid hefyd yn falch bod safon y gystadleuaeth ar gyfer y Wobr Cynaliadwyedd yn uchel iawn gyda saith ysgol newydd yn cyrraedd safonau uchaf BREEAM. Teimlwyd eu bod i gyd yn haeddu canmoliaeth ac ni fyddai dewis un yn deg. Felly ni roddwyd Gwobr Clod ac argymhellodd y panel fod pob Awdurdod a gyflwynodd geisiadau i dderbyn canmoliaeth am y safonau cynaliadwyedd a gyrhaeddwyd yn 2010.

Y beirniaid ar gyfer gwobrau 2010 oedd:

- **Yr Athro Phil Jones** – Pennaeth Ysgol Bensaerniaeth Cymru
- **Mhairi McVicar** – Darlithydd yn Ysgol Bensaerniaeth Cymru
- **Jonathan Vining** – Cyfarwyddwr Rhanbarthol Cynllunio a Dylunio WYG
- **Cynghorydd Goronwy Edwards** - Cadeirydd CLAW – Cyngor Bwrdeistref Sirol Conwy
- **Keith Morgan** - Cadeirydd Bwrdd Swyddogion a Enwebwyd CLAW – Cyngor Sir Ceredigion

Building of the Year Award / Sustainability Award  
Gwobr Adeilad y Flwyddyn / Gwobr Cynaliadwyedd

Past winners

Year	Building of the Year	Sustainability
<b>2009 Winner</b>	Neath Port Talbot County Borough Council: <i>Margam Environmental Discovery Centre</i>	Anglesey County Council: <i>Ysgol Y Graig - New Primary School</i>
<b>2009 Commendation</b>	Monmouthshire County Council: <i>Llanfoist Fawr New Primary School</i>	Powys County Council: <i>Dyfi Valley Pathfinder (Canolfan Hyddgen)</i>
<b>2009 Commendation</b>	Denbighshire County Council: <i>SCALA Cinema and Arts Centre, Prestatyn</i>	Neath Port Talbot County Borough Council: <i>Margam Environmental Discovery Centre</i>
<b>2008 Winner</b>	Neath Port Talbot County Borough Council: <i>The Quays New Office and Service Response Centre</i>	Torfaen County Borough Council: <i>The Eco Building</i>
<b>2008 Commendation</b>	Blaenau Gwent County Borough Council: <i>Metropole Cultural and Conference Centre</i>	
<b>2008 Commendation</b>	Denbighshire County Council: <i>Nant Clwyd y Dre, Ruthin</i>	
<b>2008 Commendation</b>	Torfaen County Borough Council: <i>Blaenavon World Heritage Centre</i>	
<b>2007 Winner</b>	Caerphilly County Borough Council: <i>Blackwood Interchange bus station</i>	Bridgend County Borough Council: <i>Kenfig National Nature Reserve</i>
<b>2007 Commendation</b>	Denbighshire County Council: <i>Ty Coch Barns, Llangynhafal</i>	
<b>2007 Commendation</b>	Newport City Council: <i>Rogerstone Primary School</i>	
<b>2006 Winner</b>	Caerphilly County Borough Council: <i>Tredomen Gateway Offices</i>	Ceredigion County Council: <i>Renewable Energy Facility, Penmorfa, Aberaeron</i>
<b>2006 Commendation</b>	Pembrokeshire County Council: <i>The Garrison Chapel, The Royal Dockyard, Pembroke Dock</i>	
<b>2005 Winner</b>	Newport City Council: <i>The Riverside</i>	
<b>2005 Commendation</b>	Ceredigion County Council: <i>Harbourmaster's Office, New Quay</i>	
<b>2005 Commendation</b>	Caerphilly County Borough Council: <i>Tredomen Innovation and Technology Building</i>	
<b>2005 Commendation</b>	Neath Port Talbot County Borough Council: <i>Neath Civic Centre</i>	
<b>2005 Commendation</b>	Wrexham County Borough Council: <i>Alyn Waters Country Park – New Educational Centre</i>	
<b>2004 Joint Winner</b>	Newport City Council: <i>Caerleon Cricket Pavilion</i>	
<b>2004 Joint Winner</b>	Conwy County Borough Council: <i>St George's Old National School, Llandudno</i>	
<b>2003 Winner</b>	Carmarthenshire County Council: <i>Rural Business Development Centre, Carmarthen</i>	
<b>2002 Winner</b>	Ceredigion County Council: <i>Food Centre Wales Business Development, Horeb</i>	

## New Cardiff Central Library

**Building  
of the Year  
Award**



**WINNER**

**Sustainability  
Award  
ENTRY**

### Project description

BDP has designed a state-of-the-art library that enhances the existing range of services on offer in Cardiff, and creates an atmosphere in which all members of the community can enjoy learning, contemplation and relaxation. The new Cardiff Central Library sits at the southern end of the Hayes. The library, which opened to the public in March 2009, provides quality educational materials, information and entertainment to users of all ages, spread over six storeys. It is a "living room for the city". The general components of the building consist of library and retail uses at the ground and mezzanine levels with four floors of dedicated library above finishing at the top with a partial plant floor. The library area provided

Centres. St David's opened in late 2009 and builds on present assets including the existing St David's Shopping Centre and much of the Hayes. The scheme is set to transform the Southern end of the City and give a currently underused area a new lease of life by creating attractive and safe public spaces for people to enjoy. The St David's development brings new stores, cafes, restaurants and luxury residential apartments to the heart of Cardiff, as well as enhanced public areas and facilities and a modernisation of the existing St David's Shopping Centre. The original Cardiff Library was demolished as part of the St David's development, therefore a temporary library was provided by St David's Partnership and the new library was funded and constructed by St David's Partnership under a s106 agreement to replace the original library. The new library is now owned and operated by Cardiff Council.



is 55,000 sq ft, of which 5,000 sq ft is at ground floor. The rest of the ground floor accommodates A3 Retail units comprising approximately 16,000 sq ft.

Cardiff library is part of the St David's development in central Cardiff. St David's is a joint development between Land Securities and Capital Shopping



<i>Name of client</i>	<b>St David's Partnership / Cardiff Council</b>
<i>Date of practical completion</i>	<b>22nd December 2008</b>
<i>Contract value</i>	<b>£15M</b>
<i>Project Manager</i>	<b>Gardiner &amp; Theobald</b>
<i>Architect</i>	<b>Client: BDP Professions Contractor: Stride Treglown Davies</b>
<i>Quantity Surveyor</i>	<b>Gardiner &amp; Theobald</b>
<i>Mechanical Engineer</i>	<b>Client: Foreman Roberts Contractor: Mc Canns &amp; Partners</b>
<i>Electrical Engineer</i>	<b>Client: Foreman Roberts Contractor: Mc Canns &amp; Partners</b>
<i>Structural Engineer</i>	<b>Client: Arup / Waterman Gore Contractor : ARUP</b>
<i>Clerk of Works</i>	
<i>Planning Supervisor</i>	
<i>Main Contractor</i>	<b>Laing O'Rourke</b>



Good', which would deliver an improvement on environmental performance compared to minimum legal standards, but not a substantial improvement. As the library was provided to the Council under a s106 agreement, there was a risk that a poor quality building would be provided to simply discharge the obligations of the s106 agreement with as little effort, cost and risk as possible to the developer. However, St David's Partnership and the design team were committed to delivering a sustainable building which met the requirements of BREEAM 'Excellent' and the needs of the local community within the agreed construction budget for the library.

A Bespoke BREEAM 2005 assessment was required, as there is no standard BREEAM tool available for libraries. The initial library design was reviewed by the BREEAM Centre, who then established a suite of bespoke criteria for the BREEAM assessment. At the time of design, 'Excellent' was the highest BREEAM rating available. It was considered an exemplar standard and was achieved by only a small proportion of buildings. The 'Outstanding' rating is new under BREEAM 2008, and hence was not available at the time.



Design and construction of the library was undertaken via the 'Design and Build' process. St David's Partnership initially appointed a design team in 2004, led by BDP Architects, to develop the concept design, including structural and building services systems, outline specifications and cost plan. The contractor, Laing O'Rourke (LO'R), was then appointed in 2006 to progress the original design through detailed design and construction. The original design team was retained by St David's Partnership to monitor the detailed design and construction on their behalf.

One of the planning conditions stated that the library should achieve a minimum BREEAM rating of 'Very



## Canolfan Rheidol Offices and Carbon Neutral Energy Centre, Aberystwyth



WINNER

Building  
of the Year  
Award  
ENTRY

### Project description

The project was developed as part of Ceredigion County Council's policy of rationalising their Property Asset Portfolio and providing better access to services and information for the County.

The 7,273sqm (gross) office building accommodates up to 475 staff members in a primarily open plan office space.

The building design was developed to an environmentally driven brief and provides two mix-mode wings located either side of the full height central atrium. The steel structural frame supports exposed flat pre-cast concrete soffits providing passive environmental control, with cladding materials selected to respond to regional and sustainable requirements.

**Client Brief:** The client brief for the project included the following aspirations and requirements:

- To provide a building that improves public access to information and services
- To provide open plan working in a building that is as green, efficient and functional as possible
- To provide a building that incorporates innovation, sustainable design features
- Contributes to the local community as well as to the building users, encouraging public access and participation in Local Government procedures

**Planning Constraints:** This gateway site was required to incorporate a landscape corridor and to take into



account the context of existing domestic two and three storey buildings to the south and east, as well as the visual impact from distant views.

**Materials and Methods of Construction:** The building form and construction materials were driven by a strong environmental emphasis to ensure the maximum passive environmental control was achieved. The steel frame solution supports flat pre-cast concrete floor units that are exposed above suspended lighting/acoustic rafts. The north and south wing plan depths are such that natural ventilation can occur and be driven up through the central full height atrium space, with air exiting via BMS controlled louvres at high level. The bold and simple form has been articulated by the use of brise soleil combined with zinc and terracotta cladding.

**Energy Efficiency and Carbon Emission Reduction:** The key environmental design considerations were:

<i>Name of client</i>	Ceredigion County Council
<i>Date of practical completion</i>	July 2009
<i>Contract value</i>	£16.5m (including Energy Centre)
<i>Project Manager</i>	Ceredigion County Council
<i>Architect</i>	Powell Dobson, Cardiff / Ceredigion County Council
<i>Quantity Surveyor</i>	Ceredigion County Council
<i>Mechanical Engineer</i>	Hoare Lea, Cardiff / Atkins Global, Cardiff
<i>Electrical Engineer</i>	Hoare Lea, Cardiff / Atkins Global, Cardiff
<i>Structural Engineer</i>	Clarke Bond, Cardiff / Ceredigion County Council
<i>Clerk of Works</i>	Ceredigion County Council
<i>Planning Supervisor</i>	Ceredigion County Council
<i>Main Contractor</i>	Willmott Dixon Construction, Cardiff / CMB Engineering, Cardiff

- Predominantly natural ventilation using both manually and automatically operated windows
- Roof lights and vents to ensure good ventilation and thermal comfort
- Exposed thermal mass night time cooling
- Careful orientation and use of solar shading
- Enhanced thermal and air tightness standards throughout
- High quality natural day lighting
- Automated lighting controls with daylight dimming
- Use of a renewable energy facility for heating and hot water
- Solar water heating
- Urban wind turbine to provide on-site generation of electricity



**BREEAM Certification:** The office building achieved a BREEAM Excellent Rating with a score of 73.7%. It was also the winner of the 2010 BREEAM Awards Wales.

**Effectiveness as a Workplace:** A previously fragmented work force has been brought together to facilitate efficiencies and make connections between the six separate service departments working in the new building. This was achieved by creating a communal, rather than territorial approach to the workplace. Staff collaboration and interaction comes naturally in the open plan environment. The cultural shift away from traditional local government ways of working have

also enabled the Council to take full advantage of ICT developments and reduce the demand for storage, printers, and photocopiers.

Since moving to the new building in September 2009, there has been a unique bonding between staff and building. The central full height atrium, a 'vertical street', maximizes natural light and ventilation. It also provides views for staff and emphasises the bridge links that create important physical links and strengthen joint service delivery.

**The Accessible Office:** The building has been designed to allow free and easy access for all visitors and staff. The public reception area includes a 'Changing Places' toilet facility, one of only 8 in Wales.

**Wider Sustainable Issues:** The building design also addresses wider sustainable issues such as:

- Rainwater harvesting to reduce mains water consumption
- Sustainable urban drainage systems
- Improved biodiversity by careful selection of plants and provision of wildlife habitats
- Provision of a herb garden for the office kitchen
- Specification of materials with high environmental ratings
- The use of materials with high recycled content
- Enhanced facilities for cyclists
- Reduced on-site car parking to promote the use of public transport
- Easy access to the Town's railway station for pedestrians and cyclists

**Maintenance and Management:** Throughout the design development process, extensive discussions were held with the Client Groups to ensure that the completed building would operate in a "user friendly" manner.



## LIFE Station

### Project description

The LIFE (Learning Is For Everyone) Station has provided a newly constructed building offering high value facilities to adults to improve their education and skill levels and ultimately increase their opportunities in a tight and competitive job market. The “Station” is in a Communities First area in Trevethin, Pontypool (one of two Communities First areas in Torfaen), which suffers from high deprivation levels, high unemployment levels, low educational attainment and generally low community aspirations.

The building itself comprises:

- IT training rooms and adult learning/seminar rooms
- Teaching kitchen
- Allotments
- Café
- Flexible health and treatment spaces
- Outdoor play areas
- “Flying Start” facilities to support parents and children
- Reception space
- Toilets/shower rooms



**COMMENDATION**

The main aim of the project was to address the needs of the community, encouraging residents to adopt healthier lifestyles and promoting health, education, sport and recreation activities. Residents learn about healthy living and eating, grow their own food in the LIFE Station garden allotment and then cook healthy meals in the ‘learning kitchen’.

The LIFE Station is having a dramatic impact on its surroundings both in terms of its physical presence and also on the programme of activities and initiatives

<i>Name of client</i>	<b>Regeneration Services, TCBC</b>
<i>Date of practical completion</i>	<b>4 February 2010</b>
<i>Contract value</i>	<b>£2,467,419</b>
<i>Project Manager</i>	<b>Adrian Morgan, TCBC</b>
<i>Architect</i>	<b>Powell Dobson, Cardiff</b>
<i>Quantity Surveyor</i>	<b>Alun Dando, TCBC</b>
<i>Mechanical Engineer</i>	<b>Intentium, Cardiff</b>
<i>Electrical Engineer</i>	<b>Intentium, Cardiff</b>
<i>Structural Engineer</i>	<b>Bingham Hall, Cardiff</b>
<i>Planning Supervisor</i>	<b>Kier Western, Newport/Powell Dobson, Cardiff</b>
<i>Main Contractor</i>	<b>Kier Western, Newport</b>

which will be delivered from within.  
The community now has:

- a great facility for raising education standards
- opportunities for the adjacent school to share the facilities
- greater ownership of the facility having been involved in its development

The facility brings together services provided by Health, Education and Voluntary organisations. This will provide the community with a “one-stop shop” facility to address their health, wellbeing and educational needs.

A significant value of materials used for the project came from recycled sources. All excavated material from the site has been retained and reused on the site to avoid unnecessary transportation impacts. Energy costs to run the facility will be minimal given careful design considerations, good workmanship and the careful use of materials. An element of energy to the building will be supplied by renewable technology including photovoltaic cells and geothermal systems.

In terms of its operation the centre will largely serve its community and therefore traffic impacts are low. However, the site was located on an existing bus route to ensure that car traffic would be minimised.

The construction of the building was developed via Torfaen's long term framework agreement with Kier Western which has been operational since July 2005.



The project is special in a number of ways in that it demonstrates:

- how well designed and well constructed buildings can transform the economic and social opportunities in areas of high deprivation, high unemployment and low educational attainment
- how thoughtful procurement and well established partnerships between public and private sector can deliver a high value product with significant added value to the local community
- the huge benefits of effective teamwork in not just delivering a construction project but engaging with the community
- a number of innovative practices which have improved

The management of health and safety

The delivery of zero defects at completion

Given the issues facing the industry, particularly a tendency to focus on lowest cost, it is difficult to see how this project could have been delivered to such a high quality standard and with BREEM Excellent accreditation had a very traditional lowest cost approach been adopted. The team approach from early development work through to completion has ensured good community engagement, excellent communication, a drive towards value, a clear focus on the customer and zero defects at completion.



## Ebbw Vale Welfare New Pavilion Extension

### Project description

#### History

Cricket and football matches were played at "Dobbs Field", named after the Landlord of the nearby Bridgend Hotel. The Bridgend Field as it became known was owned by Phillips & Sons, Brewers, of Station Street Newport, who by 1903 were charging £3:50 for a seasons rent. This amount was increased in 1904 to £9:00 and the following year to £10:00. In the early years of the last century, "Rolling" of the cricket field needed a horse and two men. In 1908, a sharpening stone for the scythe cost £0:02 while in 1912 a lawn mower was purchased for £10:00.



On the 18th January 1905, the club committee could not decide whether to develop the pitch or build a pavilion, but eventually planned for ground extensions that took place over the next six years. In 1906 the cost was £26:70 and £6:50 was paid for an extension of 10 Yards (9.144 Metres) by 30 Yards (27.432 Metres) in 1907. The digging out of the bank-side of the field added 1300 Sq Yards (1086.93 Sq Metres) for the 1909 season, smaller extensions were added for the 1910 and 1911 seasons.



During this period a decision was taken on the 16th May 1907 to erect a pavilion and to finance these developments it was resolved on the 30th October 1908 "that the sum of £100:00 be loaned from various gentlemen in the sums of £5:00 or multiples thereof - at

5% per annum". However, by December that year the Secretary reported that the appeal for funds "was very poor" and on the 21st January 1909 it was decided that a loan of £50:00 be obtained from the London & Provincial Bank... an account be opened... and cheques

<i>Name of client</i>	<b>BGCBC – Community Services Dept : Leisure Services</b>
<i>Date of practical completion</i>	<b>27th September 2009</b>
<i>Contract value</i>	<b>£565,000.00</b>
<i>Project Manager</i>	<b>Dino Alonzi (BGCBC)</b>
<i>Architect</i>	<b>Dino Alonzi (BGCBC)</b>
<i>Quantity Surveyor</i>	<b>Ian Hitchman (BGCBC)</b>
<i>Mechanical Engineer</i>	<b>Robin Cornelius (BGCBC)</b>
<i>Electrical Engineer</i>	<b>Gary Saunders (BGCBC)</b>
<i>Structural Engineer</i>	<b>Jon Leyshon (BGCBC)</b>
<i>Clerk of Works</i>	<b>Mark Harding (BGCBC)</b>
<i>Planning Supervisor</i>	<b>Davis Langdon</b>
<i>Main Contractor</i>	<b>SC Moore Building Contractors Ltd</b>

will be drawn for all amounts over £1:00.

In September 2007, construction work began on a second Bowls Green. This facility will be for the R.T.B. (Ebbw Vale) Bowls Club who will move from their present location behind the General Offices to the new green at the beginning of the 2009 season. The extension of the pavilion to cater for the additional usage is also planned for that time.

#### **Design**

The Architect's design principles for the proposed extension was to primarily mimic the footprint and style of the existing building whilst introducing a modern programme to meet the current and future needs required for both the cricket and bowling clubs. Creating a new entrance leading to a gathering space of two meeting rooms that leads to two separating accommodation areas serving both clubs and preventing the clash of usage from the existing layout.

#### **Funding**

The necessary funding required to develop the extension, new hardscaping and landscaping to the entrance and a new bowling green came from the Capital Programme with 2008 / 2009 Leisure Portfolio of BGCBC.



#### **Construction Phase**

Works commenced on site on 01st December 2008 and was practically complete on the 27th September 2009 and procured using traditional JCT 05 SBC/XQ (Standard Building Contract without Quantities).

#### **Use of Facility**

The proposed extension will allow the building to be split into two sections, with each serving the clubs. There is a new entrance foyer and two meeting rooms, additional four changing rooms that are accessed from the meeting rooms, and out into the existing and new bowling greens



## Caerau Primary School

Building  
of the Year  
Award  
ENTRY

Sustainability  
Award  
ENTRY



### Project description

The school has replaced Blaencaerau Junior School, Blaenllynfi Infant School and Caerau Nursery School designed for 360 mainstream pupils (aged 4-11 yrs) plus a 60 place nursery, 2 infant observation classes and 1 junior moderate learning difficulties class. A 'Flying Start' facility (aged 0-3 yrs) is also included for 25 places.

A new access road and road bridge has been provided to avoid disruption to the established road network.

Shared community facilities have been integrated within the design both inside and out.

The split level design is planned in order for the new school to nestle comfortably on the sloping brown field site using its orientation to integrate sustainable technologies whilst avoiding intrusion upon the existing adjacent dwellings. The changes in site levels have helped with the formation of an amphitheatre. This area is to be used for school fetes and community gatherings, allowing a normally utilitarian rear service area to double as a vibrant performance space or market.

The landscape is designed to incorporate the whole of the school grounds as an external classroom as

<i>Name of client</i>	<b>Children's Directorate Bridgend County Borough Council</b>
<i>Date of practical completion</i>	<b>21 December 2009</b>
<i>Contract value</i>	<b>£6.2M</b>
<i>Project Manager</i>	<b>Gaynor Thomas BCBC</b>
<i>Architect</i>	<b>Nick Dodd BCBC</b>
<i>Quantity Surveyor</i>	<b>Dewi Leyshon BCBC</b>
<i>Mechanical Engineer</i>	<b>Neil Charles Holloway Partnership</b>
<i>Electrical Engineer</i>	<b>Phil Williams Holloway Partnership</b>
<i>Structural Engineer</i>	<b>Steve George BCBC</b>
<i>Clerk of Works</i>	<b>Peter Boore BCBC (Building) Nigel Baker BCBC (M&amp;E)</b>
<i>CDM Co-ordinator</i>	<b>Nick Dodd BCBC</b>
<i>Drainage Engineer</i>	<b>David Plumley BCBC</b>
<i>Highway Engineer</i>	<b>Neil Morris Capita Glamorgan Engineering</b>
<i>Main Contractor</i>	<b>Kier Western</b>

far as possible. The external environment is an attractive, diverse and practical setting for the many functions required and provides an important educational and social resource in its own right. The development adopts a sustainable drainage system with surface water attenuation and rainwater harvesting. This allows pond storage and the slow release of surface water into the adjacent Nant Gwyn Bach watercourse. The tank stored recycled rainwater is used to flush toilets.

An internal 'street' extends through the whole length of the classroom zone as a heart to the school. This flexible circulation space provides a social, teaching and resource area linking together the various accommodation.

Natural light and ventilation systems are used to provide passive environmental comfort and control. Solar thermal panels are located on the south facing roof to contribute to the efficiency of the hot water system.

Natural or environmentally friendly materials and products are specified as far as possible, containing low embodied energy. The carbon footprint of the building is further reduced by the installation of a Biomass boiler using a (carbon neutral) wood pellet fuel system.

The roof finish is natural mill aluminium with standing seams which provides a durable, low maintenance and ultimately recyclable solution. The facias, eaves, rainwater goods and high-level cladding panels are formed in flat panel polyester powder coated aluminium. 'Light scoops' extend above the



roofline directing sunlight into the 'street' below and are articulated with brise soleil. In addition the scoops provide natural ventilation to the heart of the school using the 'stack-effect' via electrically operated windows linked to the building management system. Sun pipes in various locations direct natural light from the roof via clear prismatic covers into the deep plan areas of the building.

Large overhanging eaves with slender leading edge details prevent unauthorized access to the lower level roof areas whilst providing solar protection. The roof extends over the main entrance doors to provide a sense of welcoming, shelter and enclosure. This feature is continued on the south and east facing elevations to form covered areas for the outdoor soft play and infants' playground. Also, the 'L' shaped building plan naturally forms an enclosure giving a sense of protection and security to the youngest 'flying start' and 'early years' children.

The external masonry walls are finished with a high performance acrylic render and facing brickwork. The crisply detailed render panels and piers give mass and the appearance of strength as a counterpoint to the brickwork and window panels. Composite aluminium and timber windows are used for feature areas. High pressure laminate cladding panels over windows are finished in random silver/grey textures/shades when viewed from the playground.

Classrooms are generally paired and have shared cloakroom and toilet facilities directly adjacent to the playground to limit anti-social behaviour and improve time management. This arrangement is translated externally with doors and glazed roof features penetrating the rendered wall panels reduced in scale to a more homely front door analogy.



## Ysgol Y Castell - Refurbishment of Hall and Former Art Block

### Project description

Ysgol Y Castell is situated to the Rear of Caerphilly Castle at the West end of Crescent Road and is accessed from Nantgarw Road, which provides a direct route to the A468 Caerphilly trunk road.

Prior to the refurbishment project the School comprised of a Victorian dressed stone main building, a mobile classroom block containing two classrooms (which has now been demolished) and the former Art block, which had been derelict for many years.

Caerphilly's Building Consultancy team worked on a scheme for refurbishment with Structural Engineer's G.A Spacey and Associates. The project involved the complete refurbishment of the 861m<sup>2</sup> derelict block, which is located adjacent to the entrance of the main school building, to provide five new classrooms, an assembly hall and toilet facilities. Works included the removal of Asbestos within the building, demolition of internal walls, re-wiring, installation of a new gas heating system, new roofs, replacement of all internal and external doors and windows and complete interior refurbishment and decoration.

The existing building comprises an upper ground and lower ground floor. The lower section of the corridor, formerly a dark, subterranean space was dramatically brightened by the installation of new roof lights to create a light, inviting corridor and cloakroom space. New full height curtain walling was installed to the assembly hall making it



light and airy and providing attractive views into the adjoining woodland. The unsightly brown facing brickwork to the exterior of the building was rendered with through-coloured render, with a contrasting heritage red colour used to highlight the entrance and complement the existing building, which has red granite quoins and window cills. This completed the transformation from a drab eyesore into bright new accommodation.

The whole building has been re-cycled at a cost of around half that of a new building and the new facilities have had the effect of transforming the teaching and learning environment.



<i>Name of client</i>	<b>Caerphilly County Borough Council – Education and Learning</b>
<i>Date of practical completion</i>	<b>22nd March 2010</b>
<i>Contract value</i>	<b>£590,876.00</b>
<i>Project Manager</i>	<b>Caerphilly County Borough Council, Building Consultancy</b>
<i>Architect</i>	<b>Caerphilly County Borough Council, Building Consultancy</b>
<i>Quantity Surveyor</i>	<b>Caerphilly County Borough Council, Building Consultancy</b>
<i>Mechanical Engineer</i>	<b>Caerphilly County Borough Council, Building Consultancy</b>
<i>Electrical Engineer</i>	<b>Caerphilly County Borough Council, Building Consultancy</b>
<i>Structural Engineer</i>	<b>G A Spacey and Associates</b>
<i>Clerk of Works</i>	<b>Caerphilly County Borough Council, Building Consultancy</b>
<i>Planning Supervisor</i>	<b>Caerphilly County Borough Council, Building Consultancy</b>
<i>Main Contractor</i>	<b>Henstaff Construction Ltd</b>

## Cathays Library Refurbishment and Alterations

### Project description

Funding was provided over a three year programme (2008-2011) to upgrade and improve the library.

The design philosophy was to maintain and enhance the period style in matching materials whilst incorporating low carbon sustainable improvements where possible.



Refurbishment of the whole building included; essential repairs and upgrade of the fabric to make it weather tight, secure and fit for purpose including; weatherproofing, repairs & making good in lime mortars, hydraulic lime plaster and breathable paints



internal redecoration, re-zoning of existing space use requirements, repairs and cleaning to external masonry facades including bathstone copings and DPCs,

re-slating of all roofs, and new roof insulation, lead & GRP parapet gutters & flashings, flat roofs & rainwater goods, refurbishment of all internal & external windows and doors, replacement of all lighting with high efficient energy fittings, new high efficient radiators, recommissioning of passive stack wall and roof ventilators, refurbishment of main internal lobby doors to Part M & DDA requirements including push pad control access/ egress, restoration of oak reception desk and reinstatement of internal feature window with diamond motifs.

Alterations included key service improvements:-

- New accessible DDA compliant toilets and improved staff toilets and kitchen facilities
- A new Community Room
- Re-opening of the west wing in open plan link to the central area
- New ICT suite
- New contemporary furniture and fixtures
- Replacement skylights and removal of glazed ceiling panels to improve natural lighting and ventilation.
- New landscaping to the front approach including; improved disabled access to the main entrance with symmetrical ramps and central steps, new planter beds, seating and bicycle racks.
- Refurbishment of the boundary wall with new pier caps with diamond motifs
- Replacement boundary wall railings with integral signage.

<i>Name of client</i>	<b>Culture Leisure and Parks, Cardiff Council</b>
<i>Date of practical completion</i>	<b>26 June 2010</b>
<i>Contract value</i>	<b>£1.0 m</b>
<i>Project Manager</i>	<b>Mark Pierce, Projects Design &amp; Development, Cardiff Council</b>
<i>Architect</i>	<b>Mike Gwyther-Jones, Projects Design &amp; Development, Cardiff Council</b> <b>Chris Coyle, Projects Design &amp; Development, Cardiff Council</b>
<i>Quantity Surveyor</i>	<b>Mark Wigley, Projects Design &amp; Development, Cardiff Council</b>
<i>Mechanical Engineer</i>	<b>Elwyn Priest, Projects Design &amp; Development, Cardiff Council</b>
<i>Electrical Engineer</i>	<b>Jeff Townsend, Projects Design &amp; Development, Cardiff Council</b>
<i>Structural Engineer</i>	<b>Hadyn Griffiths, Projects Design &amp; Development, Cardiff Council</b>
<i>Clerk of Works</i>	<b>Geriant Evans, Projects Design &amp; Development, Cardiff Council</b>
<i>Planning Supervisor</i>	<b>Stella Saunders, Projects Design &amp; Development, Cardiff Council</b>
<i>Landscape Architect</i>	<b>Brian Russell, Culture Leisure and Parks, Cardiff Council</b>
<i>Main Contractor</i>	<b>ISG Pearce Ltd, Bristol</b>

## Greenway Primary School Flying Start and Nursery refurbishment

### Project description

Greenway Primary is located in one of the most deprived areas of Cardiff. Works were needed at the school as the building was in a poor state of repair and was also a target for vandalism and thefts by youths from the surrounding areas. The building had evident signs of moisture penetration where the roof had been left to leak for years; the walls were damp in areas with



evidence of mould growth, flaking paint and areas of loose plaster. It was also clear to see where leaks were causing problems due to brown water marks on ceilings all around the building. The corridors had grey bare Stramit board ceilings and all of the services were surface mounted, carpets were worn and lighting levels were low, giving the building a very gloomy feel. Works had already been carried out to renew the roof under the control of Cardiff Council's Direct Services Unit in the summer

holidays of 2009 which made it possible to carry out internal refurbishment works.

Projects, Design and Developments (Cardiff Council) were commissioned by Schools and Lifelong Services (Cardiff Council) to develop a design to relocate the existing nursery and incorporate a new Flying Start Centre in the existing building. As the brief developed and the design progressed it was evident that these

works would have a knock on effect on the interior layout of the building, meaning that the majority of the south wing of the building would also have to be refurbished due to the planned alterations. It was eventually decided by Schools and Lifelong Learning to refurbish the whole building as the new areas would look out of place among the existing dilapidated areas. It was also felt that this would uplift the surrounding community and give the area a new lease of life; the scheme was split into 2 phases.



<i>Name of client</i>	<b>Cardiff Council Schools &amp; Lifelong Learning</b>
<i>Date of practical completion</i>	<b>05 April 2010</b>
<i>Contract value</i>	<b>£ 737,000 (Phase 01:)</b>
<i>Project Manager</i>	<b>Mark Pierce Projects Design &amp; Development, Cardiff Council</b>
<i>Architect</i>	<b>Mike Gwyther-Jones Projects Design &amp; Development, Cardiff Council, Llion Rhun Projects Design &amp; Development, Cardiff Council</b>
<i>Quantity Surveyor</i>	<b>Mark Wigley Projects Design &amp; Development, Cardiff Council</b>
<i>Mechanical Engineer</i>	<b>Elwyn Priest Projects Design &amp; Development, Cardiff Council</b>
<i>Electrical Engineer</i>	<b>Bob Evans Projects Design &amp; Development, Cardiff Council</b>
<i>Structural Engineer</i>	<b>Chris James Projects Design &amp; Development, Cardiff Council</b>
<i>Clerk of Works</i>	<b>Geraint Evans Projects Design &amp; Development, Cardiff Council</b>
<i>Planning Supervisor</i>	<b>Stella Saunders, Projects Design &amp; Development, Cardiff Council</b>
<i>Main Contractor</i>	<b>ISG PEARCE LTD</b>



of the south wing which included the refurbishment of two classrooms and the conversion of the existing Travellers Education Service into a self sufficient community room. The community room would be used for adult training courses and meetings held outside of school hours and on weekends; this area was also fitted out with a kitchen and accessible WC area. Also as a part of the phase 2 works the staircase separating the south wing and the main corridor was fitted with a platform lift; this was the only feasible way to connect the south wing and main corridor due to constraints set out by the existing building.

Phase 1 of the works included relocation of the Nursery from its original position to the south wing of the building, the new 97m<sup>2</sup> nursery was fitted out with a kitchen with a lowered area suitable for the nursery children. The original IT room adjacent to the nursery was altered to house a nursery WC area, storage facilities and an accessible WC/showering facilities. The south wing was also adapted to house a new reception classroom with a flexible teaching space (separated by a moving partition) a Travellers Education Service room, new IT room, Nursery storage facilities, refurbishment of the existing library and the addition of 2 new small classrooms in the old cloakroom area. The existing 106m<sup>2</sup> nursery to the north of the building was adapted to relocate the Flying Start Centre from an existing detached building on the site. The Flying Start Centre included kitchen facilities and adjacent rooms were adapted to create an office for the Flying Start Centre, baby changing facilities, accessible WC and a low level WC area.



Phase 2 included the refurbishment of the main corridor and north wing of the school; it also included external works for ramped accesses and canopy areas to the nursery, Flying Start Centre and year 1 classroom. Under Phase 2 works were carried out to the remainder

All classrooms were fitted out with interactive whiteboards and projectors as a part of both phases and the whole building was refitted with new fibreglass window systems and aluminium doors which achieved 'secure by design' status to try and discourage any potential burglaries. Corridors were painted white and sunpipes were incorporated into the existing roof to bring extra natural lighting to the areas.

## Hawthorn Primary School

### Project description

The school is located in the residential area of Whitchurch, Cardiff. The existing Victorian building was in need of a complete refurbishment in order to provide an appropriate teaching environment. The scheme was also to amalgamate the existing primary & nursery teaching areas into one building on the site. In order for this to be achieved a substantial extension was proposed to the rear of the site.

The design philosophy was to provide the most un-obtrusive and cost effective

solution for the increased accommodation and to co-ordinate a linking element which would be sympathetic to the existing Victorian building as well as being appropriate for the required building function.

Access between the existing Victorian teaching block and the new extension is achieved by a flat roofed link area. This was considered as a less intrusive option

for the proposal and one which does not detract from the character of the existing building.

The building is constructed from traditional cavity construction with coloured



Masonry render finish to the external walls.

Each of the external entrances to the classrooms are signified by a distinctive coloured door in order to make the building more approachable and welcoming to school children.

The roof is of a standing seam construction which exceeds building regulation minimum standards for compliance. The roof includes many passive design features such as the extensive use of sun pipes and wind catchers, introducing passive measures to achieve user comfort and reducing the building's energy requirements. A Solar hot water system was also introduced on the south elevation of the existing building in order to maximise the use of passive energy methods.

<i>Name of client</i>	<b>Cardiff Council: Schools &amp; Lifelong Learning</b>
<i>Date of practical completion</i>	<b>September 2009</b>
<i>Contract value</i>	<b>£1.8m</b>
<i>Project Manager</i>	<b>Anne Hacker Projects Design &amp; Development, Cardiff Council</b>
<i>Architect</i>	<b>Mike Gwyther-Jones Projects Design &amp; Development, Cardiff Council</b> <b>Robyn Thomas Projects Design &amp; Development, Cardiff Council</b>
<i>Quantity Surveyor</i>	<b>Mark Wigley Projects Design &amp; Development, Cardiff Council</b>
<i>Mechanical Engineer</i>	<b>Elwyn Priest Projects Design &amp; Development, Cardiff Council</b>
<i>Electrical Engineer</i>	<b>Jeff Townsend Projects Design &amp; Development, Cardiff Council</b>
<i>Structural Engineer</i>	<b>Haydn Griffiths Projects Design &amp; Development, Cardiff Council</b>
<i>Clerk of Works</i>	<b>Geraint Evans Projects Design &amp; Development, Cardiff Council</b>
<i>Planning Supervisor</i>	<b>Stella Saunders Projects Design &amp; Development, Cardiff Council</b>
<i>Main Contractor</i>	<b>Stradform Ltd</b>

## New Primary School, Synod Inn. Ysgol Bro Sion Cwilt

### Project description

#### Brief description of the site and context:

The new area school 'Ysgol Bro Sion Cwilt' is sited on a level site on the edge of Synod Inn, with pleasant views overlooking the rural landscape of Ceredigion, and looks out over New Quay to the Irish Sea. The site is connected by a pedestrian link to the village of Synod Inn and the main A487.

A substantial natural habitat area has been developed adjacent to the new primary school and the site layout provides a wide variety of level hard and soft play and games areas directly accessible from the school buildings.

#### Description of development:

The school has been carefully planned and designed to provide attractive and flexible new teaching accommodation for children between the ages of 3 and 11. There are also associated community facilities provided where parents, children and teachers and helpers can meet and work together.

All the accommodation is on one level, fully accessible and organised in relation to a central top-lit corridor. All the teaching spaces in the new building have extensive views out into the landscape and have direct access out onto covered external areas designed for outdoor teaching and play.

The accommodation in the new school comprises:

- Single entrance with reception and foyer areas for the early years and main entrances to the school.
- An early years nursery and reception class teaching suite with separate play area and parents room.
- 5 Infant and Junior Classrooms with flexible connecting areas to suit small group working and varying class sizes taught through the medium of both English and Welsh
- A design technology room.
- A main school hall and kitchen.



<i>Name of client</i>	<b>Ceredigion County Council</b>
<i>Date of practical completion</i>	<b>November 2009</b>
<i>Contract value</i>	<b>£3.5m</b>
<i>Project Manager</i>	<b>Ceredigion County Council</b>
<i>Architect</i>	<b>Ceredigion County Council</b>
<i>Quantity Surveyor</i>	<b>Ceredigion County Council</b>
<i>Mechanical Engineer</i>	<b>Ceredigion County Council</b>
<i>Electrical Engineer</i>	<b>Ceredigion County Council</b>
<i>Structural Engineer</i>	<b>Ceredigion County Council</b>
<i>Clerk of Works</i>	<b>Ceredigion County Council</b>
<i>Planning Supervisor</i>	<b>Ceredigion County Council</b>
<i>Main Contractor</i>	<b>Dawnus Construction Ltd. Swansea</b>

- A small hall for drama and music.
- A Library and resources room.
- A special needs suite.
- Staff room and staff offices.
- Toilets, staff kitchen, showers, storage, cleaners rooms and boiler facilities

The materials used in the new building are facing brickwork and smooth render externally, plastered and block work internally, reconstituted slate tiles and aluminium doors and windows.

Outside spaces provided include a specialist 'adventure play' trail, a bunded outdoor amphitheatre with play house, a large sandpit, and for younger children an area containing a covered safety play surface. A small allotment area has also been provided.

The school has been designed to encourage community use and a major element within the community provision is the inclusion of an all weather pitch for use by the school, local sports clubs and the wider community.

All parking, vehicular movement including bus drop off points etc. are contained within the site boundary.

#### **Brief details of the design and development process:**

The brief for the new school was developed through detailed consultation with the Local Authority Education Department, their specialist advisers and the local community.

Colours for finishes, furniture and external play areas were chosen after consultation with the school's new head teacher.

Brief description of sustainability strategy and implementation:

The design of the new school incorporates a number of elements that form part of the Council's sustainability strategy for new Education buildings and that responded to the recommendations of BREEAM for Schools:



- The use of natural lighting and natural ventilation as fundamental principles in the design and specification of the school
- The specification of a surface water re-cycling system
- The specification of an energy management system
- The specification of materials with a high recycled content (e.g. for roof covering and doors and windows).
- Heating of the school is provided by Ground Source Heat pumps.



#### **BREEAM rating/ Code for Sustainable Homes level:**

A BREEAM assessment was carried out for the school and has indicated that the project would achieve a 'good' rating.

#### **In Summary**

The new school has proved to be very popular with pupils, parents and staff and now draws from a wide catchment area and with the provision of the all weather surface is being successfully and flexibly used by the local community.

## Penyrheol Fire Damage Rebuild

### Project description

The project brief was to rebuild part of the school destroyed by arson in March 2006 to 21st Century Standards. The 2/3 storey building of 5431 m<sup>2</sup> is designed to dominate the site offering an imposing vista from the road. The ground was subject to much mining activity, the building's foundations and position on the site has been designed to overcome the problems, and allow space and flexibility for possible future extensions to the block. Internally open wide corridors gives the modern "street" effect.

The internal layout is configured so that the same subject rooms are located together on the same floor. It is protected by a sprinkler system, CCTV, intruder and fire alarms to Secured by Design Standards. The rebuild benefits from the inclusion of a number of "sustainable" measures that the former structure did not have, such



as solar panels, photo voltaic cells, rainwater harvesting, natural light and low energy lighting, and natural stack ventilation. The internal environment is controlled by a Building Management System. Solar shading is provided by overhanging roofs, Brise



Soleil and blinds to minimise solar gain. Areas are provided for the school to segregate its waste for recycling and disposal.

The Council took the opportunity of procuring the rebuild by using a collaborative approach that had been used on other schemes to not only delivering high quality buildings on time and on budget but also delivering a better end product with buy in from all stakeholders. The Council and it's stakeholders worked with Carillion from inception developing the scheme from a blank sheet of paper.

The rebuild was to provide accomodation for approximately 900 pupils.

<i>Name of client</i>	<b>City and County of Swansea Education Department</b>
<i>Date of practical completion</i>	<b>3rd August 2009</b>
<i>Contract value</i>	<b>£9,040,398.12</b>
<i>Project Manager</i>	<b>Geraint Flowers - Education</b>
<i>Design Manager</i>	<b>John Fletcher – CB &amp; PS</b>
<i>Architect</i>	<b>Stride Treglown Davies</b>
<i>Mechanical Engineer</i>	<b>Scott Wilson</b>
<i>Electrical Engineer</i>	<b>Scott Wilson</b>
<i>Structural Engineer</i>	<b>Opus</b>
<i>CDM Coordinator</i>	<b>Faithful &amp; Gould</b>
<i>Main Contractor</i>	<b>Carillion Building</b>

## YGG Pontybrenin – 4 Classroom Extension



### Project description

The development will contribute to and support The City and County of Swansea in the delivery of the approved City and County of Swansea's target for increasing Welsh Primary School Places as set out in the Welsh Education Scheme.

The Project Brief was to provide a fit for purpose 4 Classroom Teaching Block which consisted of new toilet facilities including an accessible toilet, plant room and a link foyer to the existing School.

Each classroom incorporated a storeroom, cloaks area and enjoyed direct access to the external recreation space. As part of the scheme, temporary classroom accommodation was removed from site to align the development with the Welsh Assembly Government's 2010 target to achieve a fit purpose, reasonable standard of accommodation and the Authority's Quality in Education 2020 strategy to raise the standard of achievement and attainment for all children and young people. To improve the quality of the learning environment and make the best use of human physical and financial resources.

The proposed extension was in compliance with both BS8300 and Approved Document M and is fully accessible.

New ramps were designed from the main and secondary access routes each classroom has a level access onto the recreation area.

The proposed extension has the benefit of a new sprinkler system.

The proposed extension benefited from the inclusion of a number of sustainable measures such as:-

- Natural light and low energy light fittings
- High efficiency boilers
- Double glazed windows and doors
- Under floor heating
- Natural stonework
- Automatic lighting controls
- Natural ventilation
- Natural roof slates



<i>Name of client</i>	<b>Education Department, City and County of Swansea</b>
<i>Date of practical completion</i>	<b>3rd September 2009</b>
<i>Contract value</i>	<b>£728k</b>
<i>Project Manager</i>	<b>Mr H Jones</b>
<i>Architect</i>	<b>Mr P K Johnson</b>
<i>Technical Assistant</i>	<b>Mrs A Rees</b>
<i>Quantity Surveyor</i>	<b>Capita Symonds</b>
<i>Mechanical Engineer</i>	<b>RPS Gregory</b>
<i>Electrical Engineer</i>	<b>RPS Gregory</b>
<i>Structural Engineer</i>	<b>Mr T O'Brien</b>
<i>CDM Co-ordinator</i>	<b>Capita Symonds</b>
<i>Main Contractor</i>	<b>Corporate Building and Property Services</b>

## Prestatyn Central Beach Environmental Improvements

### Project description

This area, adjacent to the Nova Leisure Centre in Prestatyn, represents one end of Offa's Dyke (Clawdd Offa). It had become rather featureless and a phased programme of improvements was undertaken by Denbighshire County Council to highlight its significance. To this end DCC's Economic Regeneration Section sought funding from the WAG to carry out enhancement works. An iconic sculpture feature was commissioned from CAMM Design in Birkenhead. The Sculpture installation is called Beginning and End (Dechreu a Diwedd) and reflects the North-South Axis of Offa's fortification.

The surrounding hard landscaping was designed to be carried out in two phases. These areas now feature free-formed swathes of coloured concrete finish and curvilinear steps. In such an exposed maritime environment features and finishes are designed to be robust. Sculptured seating in cast concrete and stainless steel windbreaks bring interest and vibrancy to the scene.

The introduction of lighting to highlight the new features animates the nighttime scene and extends the opportunities to visit a site which overlooks an

ever-changing seascape. Careful detailing ensures DDA compliance so that all can enjoy a much enhanced facility.



<i>Name of client</i>	<b>Regeneration &amp; Tourism, Denbighshire County Council</b>
<i>Date of practical completion</i>	<b>22nd May 2009 (Phase 3.1) &amp; 14th April 2010 (Phase 3.2A)</b>
<i>Contract value</i>	<b>£300,000.00 (3.1) &amp; £180,500.00 (3.2A)</b>
<i>Project Manager</i>	<b>Michelle Rendell (Economic Regeneration Denbighshire C.C.)</b>
<i>Architect</i>	<b>David Whieldon (Design &amp; Development- Denbighshire C.C.)</b>
<i>Quantity Surveyor</i>	<b>Sion R Evans (3.1) &amp; Heather Cafearo (3.2A) (Design &amp; Development )</b>
<i>Electrical Engineer</i>	<b>Terry Nolan (Davies Partnership)</b>
<i>Structural Engineer</i>	<b>Garry Taylor (3.1) &amp; Graham Tullet (3.2A) (Opus International Consultants (UK) Ltd)</b>
<i>Clerk of Works</i>	<b>Andrew Bailey (Design &amp; Development- Denbighshire C.C. )</b>
<i>CDM Co-ordinator</i>	<b>Tom Price (Design &amp; Development- Denbighshire C.C. )</b>
<i>Main Contractor</i>	<b>KM Construction (NW) Ltd</b>

## Ysgol Dinas Brân New Dining and Kitchen Block



### Project description

The project involved the construction of new kitchen / dining facilities, a four storey lift / link building to the North East of the site and internal refurbishment and conversion of the former gym changing rooms and kitchen servery areas into classrooms.

The new kitchen / dining room facilities comprise a rectangular kitchen block 31.6m long x 7.7m wide, adjoining a curved dining room building 34.9m long x 6.5-12.4m wide; defined and delineated with a continuous glazed rooflight.

The orientation and layout of the internal room areas and window elevations have been carefully designed and considered in relation to the site boundaries and adjoining buildings.

The South East facing curtain walling allowing light and views through the tree lined boundary to the Vale of Llangollen landscape below.

The existing internal classroom corridor areas had a number of level changes which were inaccessible for disabled pupils teachers & visitors. The provision of the new four storey through-lift allows access to all levels of the existing four storey classroom block and the CDT / Dining Room / Kitchen levels.

Specific areas of interest for the headteacher were to underline the schools International

connection and thereby the understanding of different cultures & societies across the world . International food weeks, where different foods are sampled by the pupils will raise the standard and reinforce the aspiration to achieve a Healthy diet through freshly cooked produce

The Project Architect's design aspiration was to procure an environmentally sustainable energy efficient building, reflecting good quality design with materials which reflect 'clean sleek lines'.



<i>Name of client</i>	<b>Lifelong Learning , Denbighshire County Council</b>
<i>Date of practical completion</i>	<b>February 2010</b>
<i>Contract value</i>	<b>£ 2.17m</b>
<i>Project Manager</i>	<b>Sian Owens /Peter Clayton (Corporate Project Managers , D.C.C. )</b>
<i>Architect</i>	<b>David Rich (Design &amp; Development , D.C.C.)</b>
<i>Quantity Surveyor</i>	<b>Sion R Evans (Design &amp; Development , D.C.C.)</b>
<i>Mechanical Engineer</i>	<b>Davies Partnership ( Peter Lyke )</b>
<i>Electrical Engineer</i>	<b>Davies Partnership ( Mike Flanagan )</b>
<i>Structural Engineer</i>	<b>Bingham Rawlings Partnership ( Mike Jones )</b>
<i>Clerk of Works</i>	<b>Ray McMonagle (Design &amp; Development- Denbighshire C.C. )</b>
<i>Planning Supervisor</i>	<b>Tom Price (Design &amp; Development- Denbighshire C.C. )</b>
<i>Main Contractor</i>	<b>PaveAways Ltd</b>

## Refurbishment of Connah's Quay Library

### Project description

Remodelling of existing two storey Library

#### Accommodation:

The 245m<sup>2</sup> Ground Floor is divided into the following:

Entrance Lobby

Adult Lending Library with control desk and IT hub.

Children's Library

Boiler Room

Store Room

Lift and stair access to First Floor level.

The 136m<sup>2</sup> First Floor is divided into the following:

Reference Library

IT Training Facility

Disabled and Staff Toilet

Staff Room/Kitchen

Office

Store Rooms

#### Brief Introduction:

The project to upgrade the library was made possible by a £300,000 grant from the Welsh Assembly Government under its Libraries for Life programme, which aims to attract more people to use libraries and their facilities by modernising accommodation and the services on offer.



The investment at Connah's Quay has seen the whole ground floor opened up, providing more usable space. The once isolated Children's Library is now in clear view of the staff control desk allowing greater security. The new glass entrance lobby, with automatic doors allows improved public access. The revised layout and lighting provides a much improved facility and the lift to the first floor allows access to a newly equipped ICT training suite and quiet study area.

#### Aims of the project.

To assist people of all ages in identifying and achieving their lifelong learning goals and to upgrade and enhance the community learning facilities.

<i>Name of client</i>	<b>Directorate of Life Long Learning, Flintshire County Council</b>
<i>Date of practical completion</i>	<b>29/01/2010</b>
<i>Contract value</i>	<b>£218,156.45</b>
<i>Project Manager</i>	<b>N/A</b>
<i>Architect</i>	<b>Chris Hunt</b>
<i>Quantity Surveyor</i>	<b>John Owen</b>
<i>Mechanical Engineer</i>	<b>Dave Moreton</b>
<i>Electrical Engineer</i>	<b>Graham Astle</b>
<i>Structural Engineer</i>	<b>Brian Crawford (Hughes and Crawford)</b>
<i>Clerk of Works</i>	<b>Steve Wilday</b>
<i>Planning Supervisor</i>	<b>Sandy Jennings (Jennings Safety Services)</b>
<i>Main Contractor</i>	<b>Anwyl Construction Company Ltd.</b>

### Overall objective and achievements of the project:

- Improving access for disabled customers by installing automatic entrance doors, increasing door widths and creating a disabled accessible toilet.
- Making the public facilities on the first floor accessible to all users by providing a DDA compliant lift.
- Allocating more space to public areas. An increase in the overall useful public space by the creation of a new entrance lobby from an existing open canopy allowing the original foyer, which presented an unwelcoming image on entering, to be integrated into the body of the library.
- Improving security by removing internal walls, and relocating the children's library and the control desk to create a more flexible layout. Re-siting the children's area to improve supervision and make it easier for parents/carers and children to use the library together.
- Improving the entrance and stairway, creating a more positive initial impression on visitors
- Enhancing the energy efficiency of the building by replacing the windows and upgrading the lighting. To overcome glare and overheating during the summer months by fitting new aluminium double glazed windows with improved natural ventilation, Suncool high performance glass blinds.
- Creating more storage by converting the old tank room.
- Improved staff facilities by upgrading existing toilet, kitchen/staff room and office.
- Improve fire safety by providing additional fire exits.
- Refurbishing internal walls and the stairway to present a more welcoming transition to the upper floor.
- Increasing the number of public access pc's in the community learning suite to 15, including enhanced ICT learning equipment, making it a more viable learning space for external providers.
- The provision of a more user-friendly Reference Library/quiet study area.
- The inclusion of a new hub for the public access computers.



## Rogiet Primary School

### Project description

Rogiet Primary School is a new 210 Place Primary School with Community facilities in the village of Rogiet, South Monmouthshire. It replaces an existing building which was of aluminium construction and was in very poor condition. The school replacement is part of an ongoing review of educational buildings in Monmouthshire.

The project was a diversion from previous MCC designs in that the site particulars required that the design dealt with noise levels from the adjacent motorway and railway and also that it achieved a high level of sustainability. The BREEAM rating achieved was 78.18%, the highest level of any school building in the UK at the time.

The end result has been a building that is both sustainable and well laid out in terms of learning facilities with a number of child friendly features including the colour coding of door furniture to indicate to the children which rooms they can enter without knocking. The school has a very pleasant feel to it and it has been very well received by the local community.



The project is the latest in a succession of other projects (25) in all, over a twelve year period, constructed through the County Council's award winning partnership with Willmott Dixon Construction.

<i>Name of client</i>	<b>Monmouthshire County Council</b>
<i>Date of practical completion</i>	<b>26th October 2009</b>
<i>Contract value</i>	<b>£4.16,</b>
<i>Project Manager</i>	<b>John Davies/Sarah Williams/Jacqui Morris</b>
<i>Architect</i>	<b>White Design</b>
<i>Quantity Surveyor</i>	<b>MCC/WD Partnership</b>
<i>Mechanical Engineer</i>	<b>MCC/WD Partnership</b>
<i>Electrical Engineer</i>	<b>MCC/WD Partnership</b>
<i>Structural Engineer</i>	<b>MCC/WD Partnership</b>
<i>Clerk of Works</i>	<b>Roger Smith</b>
<i>Planning Supervisor</i>	<b>Faithful &amp; Gould</b>
<i>Main Contractor</i>	<b>Willmott Dixon</b>



Pen Afan Primary, Abergwynfi, Port Talbot



**Project description**

Abergwynfi Infants & Juniors was located over 2 separate sites. The project involved the amalgamation of both schools, demolition of both schools and redevelopment of the junior school site.

**Clients Brief**

The area of Blaengwynfi is considered a Communities First area. (Communities First is a Welsh Assembly initiative aimed to regenerate the 100 most deprived areas of Wales)

The brief was very simplistic. Our Education department required our team to amalgamate the existing infant and junior

The existing schools facilities were previously used extensively by the pupils and the community, but with sub-standard accommodation the service delivery was restricted. Providing a community hub, teaching

<i>Name of client</i>	NPTCBC
<i>Date of practical completion</i>	31st August 2009
<i>Contract value</i>	
<i>Project Manager</i>	Clive Barnard - NPT
<i>Architect</i>	Jonathan Morris – NPT
<i>Quantity Surveyor</i>	Andrew Buller – NPT
<i>Mechanical Engineer</i>	Mike Griffiths/Rob Peake – NPT
<i>Electrical Engineer</i>	Phil Wilcox – NPT
<i>Structural Engineer</i>	Phil Marsden – Clarke Bond Structures
<i>Clerk of Works</i>	Colin Sweeney – NPT
<i>Planning Supervisor</i>	Jeff Lewis – NPT
<i>Main Contractor</i>	Interserve (Site Manager – Gary Ward)

space, and general community facility was considered fundamental to the projects success, in addition, it was felt that a distinctive modern iconic building would further inspire the community to take 'ownership' of the facility, be proud of it, and utilise it to its full potential.

At the concept stage our client expressed a requirement to have the option of adding or removing 1 or 2 classroom spaces. This aspect was extremely difficult giving the site constraints. With this critical element in mind, the concept of 'pod' bases laid out in a scattered building form around a central hub evolved. This form enabled us to add or remove 'pods' without it impacting on the overall appearance of the build. This can be more clearly seen in the plan form, where the 'pod' spaces are linked by corridor space with easily changeable infill accommodation between.

**Planning Constraints**

The site sits at an elevated position at the head of the village and has an extensive history of coal workings on and around the site, with the area directly below the building previously providing mine entries. Following closure of the local mines the valley area was in-filled and the river culvert constructed.

**Form**

The main hub of the school is constructed around the hall. This is the tallest part of the school providing an internal space of 6m height to facilitate badminton play. To the east of the main hall lies the 4 junior classrooms and toilets, to the west lies the 2 infant classrooms), community class (peach), and foundation phase accommodation (grey).



The community, foundation and main hub all have their own separate access provision from the external paved / car park area.

Throughout the project we have aspired to achieve a BREEAM Excellent rating (currently undergoing final assessment). The combination of fitness for purpose, maintenance and environmental credentials of materials have been very important aspects during selection.

The building is naturally ventilated and naturally lit. The roof lanterns at the head of each circular classroom and hall provide both natural light and vent directly into the space below. It was considered a fundamental

aspect of the design to deliver a robust system for the delivery of the vent and light systems. Roof lights and sun pipes provide natural light to the corridor space.

The building itself is a one-off, the buildings design is unique. This was an intentional driver to encourage change, not in building form, but in general. We feel this is essential to the growth of the community. The building inspires thought and visitors rarely leave without the feeling of being intrigued.





## Newport High School

### Project description

Designed for 1,100 students, Newport High School provides for extensive community use and supports Newport City Council's vision defined within the Single Education Plan: 'All our children – all our business'. The school is a symbol of civic investment, engendering ownership and pride within the community. It is the first new secondary school directly funded by the Newport City Council (NCC) in 40 years. Following an intensive period of funding analysis, NCC created a robust business case to demonstrate the benefits of the long-term investment and land sale strategy. The Welsh Assembly Government responded positively to the business case and provided support for the funding gaps. NCC also created a capital borrowing structure with the private market that supported the funding model. NCC implemented a two-stage procurement process adopting the NEC Suite of Contracts.

The design, construction and ongoing use have been specified with sustainability firmly in mind.

It's the first secondary school in Wales to achieve BREEAM Excellent and this can be attributed to the collaborative and holistic approach of Newport City Council and its construction partners: HLM Architects, Leadbitter Group, Arup, Clarkebond and Davis Langdon. The entire team, including an external BREEAM assessor, was assembled before the first concept was created, and an extensive consultation and interactive design process began.

The school provides sports and leisure facilities. Access is via a central entrance with two reception areas – one for the school and one for the community – which control visitors to the building and enhance security. Outside of school hours (7-8am and 4:30-10pm Monday to Friday, and 8am-7pm Saturday and Sunday), these facilities, branded as the Active Living Centre, are available to the wider community: 25m swimming pool, 18-station fitness suite with TechnoGym cardio-vascular and resistance equipment, café, sprung-floor dance studio, large sports hall, indoor cricket nets, floodlit Astroturf pitch for hockey



<i>Name of client</i>	<b>NPTCBC</b>
<i>Date of practical completion</i>	<b>October 2009</b>
<i>Contract value</i>	<b>£28.1m</b>
<i>Project Manager</i>	<b>Davis Langdon</b>
<i>Architect</i>	<b>HLM Architects</b>
<i>Quantity Surveyor</i>	<b>Davis Langdon</b>
<i>Mechanical Engineer</i>	<b>ARUP</b>
<i>Electrical Engineer</i>	<b>ARUP</b>
<i>Structural Engineer</i>	<b>ClarkeBond</b>
<i>Clerk of Works</i>	<b>Newport City Council</b>
<i>Planning Supervisor</i>	<b>Newport City Council</b>
<i>Main Contractor</i>	<b>Leadbitter Construction</b>

and football and external playing fields. The school has 60 classrooms, including 34 general teaching rooms, eight science labs, eight ICT suites and six SEN areas, plus a dedicated vocational training and learning resource centre designed to deliver skills-based adult learning.

The design adopts an innovative approach to education in that 'every space is a learning space', promoting personalised learning as well as a 'clustering' approach. The Design Team set out to create spaces which responded to the aspiration encapsulated by the four I's:

Iconic Inspiring Inviting Involving

An integrated ICT solution allows these education spaces to function, and the concept of corridors has, to some degree, been removed.

- There is a hierarchy of teaching and learning spaces areas designed to promote learning that support the school in a range of teaching methods incorporating sufficient flexibility to adapt to change.
- Spaces are non-dogmatic, transcend fashion and avoid the assertion that there is a single solution.
- Adjacencies of spaces and resources allow maximum access to resources and facilities for all, including a community focused zone to promote extended learning activities.
- Individual areas of appropriate scale and character achieve a sense of belonging and identity for personalised learning with links to electronic resources.
- Landscaped learning spaces are dedicated for curriculum, vocational and socially focused activities.
- The building itself promotes innovative features and becomes a learning resource for sustainable construction, renewable energy sources, landscape/ biodiversity etc. ICT provision will play a part in monitoring the environmental performance of the building.



## Haverfordwest Leisure Centre

### Project description

The ambition for this project was to create a Leisure Centre for Haverfordwest that would be seen as a County Flagship, both by virtue of the quality of the facilities provided, and its architectural design.

The architects responded to the brief with a bold contemporary design, making a strong statement about the status of this public building, whilst respecting the conservation context of St Thomas Green.

In developing proposals for this site the first and most important decision was to provide all the main facilities on a single level. This had many advantages in terms of circulation and supervision and helped to ensure that the building was accessible to all members of the community.

The Leisure Centre was conceived with a clear respect to its context, and references the scale and form of the adjacent buildings by reducing down the eaves to match those nearby. The building's overall volume has been disguised through the use of a curved roof and fractured façades, which relate to the internal activities behind, and give the building a clear architectural legibility. The welcoming front façade with splayed supporting columns has contributed to the overall success of the recent enhancement to St. Thomas Green, with the new café animating the public space and creating a meeting point within the town.



The swimming pools have been located next to the main entrance to provide interest, activity, and views from the reception and social areas. The changing areas and other ancillary spaces are located in the core of the building because they need no views or natural light, whilst the studios and fitness gym face east and west to obtain both views and natural

light yet avoid overheating. The sports hall is located at the 'back' of the site because by its nature it can contribute very little to the streetscape or to the quality of the public realm.

The form of the main section through the building is derived from the need to enclose the minimum volume required to accommodate

the various uses. This is particularly important in the pool where the air over the water has to be maintained at 32 degrees. Minimising that volume has positive advantages for energy conservation and the life time costs of running such a facility.

The dramatic roof shape and the bold use of modern materials have resulted in an exciting contemporary building for the community which has sufficient presence and dignity to signify itself as a major public building.

Perhaps, Haverfordwest Leisure Centre's most impressive accolade is the building's popularity and how it has engaged with the local community who are taking full advantage of the fantastic facilities on offer.

<i>Name of client</i>	<b>Pembrokeshire County Council</b>
<i>Date of practical completion</i>	<b>27th February 2009</b>
<i>Contract value</i>	<b>£8,229,198.00</b>
<i>Project Manager</i>	<b>Steve Owens</b>
<i>Architect</i>	<b>Childs+Sulzmann Architects</b>
<i>Quantity Surveyor</i>	<b>Andrew Poole</b>
<i>Mechanical Engineer</i>	<b>Hulley &amp; Kirkwood</b>
<i>Electrical Engineer</i>	<b>Hulley &amp; Kirkwood</b>
<i>Structural Engineer</i>	<b>Rodger Casey</b>
<i>Clerk of Works</i>	<b>Jeff Barnes</b>
<i>Planning Supervisor</i>	<b>The Contractor</b>
<i>Main Contractor</i>	<b>Cottons Ltd</b>

## Pathway Education Centre, Newtown

### Project description

Powys County Council operates a Home Tuition Service to meet the needs of pupils who are unable to attend school. The service is provided from two bases in Newtown and Brecon.

With increasing demand it was recognised that the rented premises from which the service was delivered in Newtown was no longer adequate and consequently alternative premises were sought. A former Youth Centre and Hall was identified, this lay close to the town centre and benefited from good public transport links.

In order to meet the educational needs of the students the accommodation brief included:

- 5 Classroom bases
- Science room
- Medical room
- Interview rooms
- Office
- Kitchen and social area

The design principles for the scheme were to upgrade the existing building structure, whilst retaining some of the original features, to create a modern facility to meet the current needs of the Complementary Education Service.

The existing building was a poorly insulated structure with large areas of single glazing, inefficient heating and poor environmental controls. The existing boiler plant lacked efficient control but was relatively new.

The new structure benefited from insulation to external walls and roof/ceiling and replacement windows, glazed to current standards. The old hall area had a replacement floor installed and the opportunity was taken to provide insulation and under-floor heating to that area. The remainder of the heating system

was provided with low surface temperature natural convectors.

Services have all been upgraded with high frequency lighting controls installed with energy efficient lamps and daylight/occupancy dimming, and mechanical ventilation in the form of inverter controlled fresh air/heat recovery units to the classroom areas. A new heating control system was provided to serve both the two zones of the building and can be independently time and temperature controlled and are graphically linked via an interface to be accessed anywhere on the Powys Intranet.



<i>Name of client</i>	<b>Powys County Council</b>
<i>Date of practical completion</i>	<b>30th April 2010</b>
<i>Contract value</i>	<b>£336,892.00</b>
<i>Project Manager</i>	<b>Powys County Council, Property &amp; Design Services</b>
<i>Architect</i>	<b>Powys County Council, Property &amp; Design Services</b>
<i>Quantity Surveyor</i>	<b>Capita Symonds Ltd.</b>
<i>Mechanical Engineer</i>	<b>Powys County Council, Property &amp; Design Services</b>
<i>Electrical Engineer</i>	<b>Powys County Council, Property &amp; Design Services</b>
<i>Clerk of Works</i>	<b>Powys County Council, Property &amp; Design Services</b>
<i>CDM-Coordinator</i>	<b>Capita Symonds Ltd.</b>
<i>Main Contractor</i>	<b>Gareth Morris Construction</b>

## Newbridge-on-Wye, New Primary School



### Project description

As part of the school modernisation agenda within Powys, Newbridge-on-Wye and Howey Church in Wales Schools were identified as falling short in terms 'fit for purpose' educational facilities in the 21st Century. Following consultation, it was agreed to provide one new purpose built facility on the site of the existing school at Newbridge and to incorporate the existing community hall, thus securing the long term future of the community facility whose ongoing viability was in question.

The project has supported the core organisational values of the Authority, increasing accessibility to educational and community facilities for pupils, staff, parents and local organisations. The project team ensured that resources were focused on the priorities of the Authority, striving to reduce carbon emissions in line with stringent targets set by Welsh Assembly Government.

The Council engaged with the local community and local organisations in developing a community education facility at Newbridge-on-Wye that would meet the local needs and negate the requirement for the replication of resources for a separate school hall and community hall facility on the same site. This has been realised in the form of extended school services, opportunities for lifelong learning, personal development and the strengthening of the local community.

The project was funded by a grant from Welsh Assembly Government through their DCELLS department (education) and Powys County Council capital funding.

The Board of the Council approved the scheme in late May '08 and the requirement for the new school to be fully functional by September '09 following the closure of Howey school. Therefore, it was decided that traditional design and construction methods would

<i>Name of client</i>	<b>Powys County Council</b>
<i>Date of practical completion</i>	<b>3September 2009</b>
<i>Contract value</i>	<b>£1.9M</b>
<i>Project Manager</i>	<b>Capita Symonds Ltd. / PCC Property &amp; Design Services</b>
<i>Architect</i>	<b>Capita Symonds Ltd. / Yorkon Ltd.</b>
<i>Quantity Surveyor</i>	<b>Capita Symonds Ltd.</b>
<i>Mechanical Engineer</i>	<b>Yorkon Ltd / PCC, Property &amp; Design Services</b>
<i>Electrical Engineer</i>	<b>Yorkon Ltd / PCC, Property &amp; Design Services</b>
<i>CDM-Coordinator</i>	<b>Capita Symonds Ltd.</b>
<i>Main Contractor</i>	<b>Yorkon Limited, Huntington York</b>

not allow this timetable to be met. A Design and Build contract was used incorporating off site modular construction. Procurement commenced in June and the contractor appointed soon after. The contractor and consultant worked rapidly to develop the design and submit the planning application by early September. Work had already commenced on site with the demolition of the old school and temporary classrooms installed on the site of what would be the new multi games area during the summer recess. Following completion of ground works in February '09, sixteen factory built modules were delivered to site and erected in just one week. These units formed the 'shell' of the new school. Hand over of the school was taken some 16 weeks from the date that the first module arrived at the site. It is estimated that the overall procurement, design and construction period was approximately halved compared to employing traditional methods for all stages.



- Rain Water Harvesting with the capacity to service all of the school w.c. areas.
- Surface water permeable paving system and soakaways reduce the impact of surface water from the games area on local drainage systems.
- Natural Ventilation provides comfort cooling with minimal energy demand.
- Building Energy Management System (BEMS): allows remote monitoring to ensure optimum services efficiency.

To achieve the BREEAM Excellent standard the Project Manager had to ensure close working with designers, fabricators, BREEAM assessor, and renewable energy and sustainability consultants.

By achieving the BREEAM Excellent standard for the new school it has provided a building that exceeds the current building regulatory standards and has taken serious consideration of Management, Health and Wellbeing, Transport, Water, Materials, Land Use, Ecology and Pollution within the context of the project impact locally.

Sustainable systems incorporated into the project:

- Bio-mass pellet Heating system
- Solar Thermal Panels contribute to the domestic hot water requirements.
- Zoned PIR lighting controls to reduce energy consumption.



Sustainable construction: Off site construction provides significant environmental benefits.

- Typically consume 15% less embodied energy than traditional buildings of the same size.
- Controlled factory environment generates a fraction of the waste of conventional building methods.
- Improved control over the recycling of materials.
- Up to 90% fewer vehicular movements.
- Construction methods minimises air leakage, reducing plant size, energy consumption and CO2 emissions over the life cycle of the building.

The new school building at Newbridge-on-Wye brings the benefit of providing a fit for purpose integrated education facility, working with low environmental impacts, reduced long term property maintenance, condition liability and a longer serviceable building life.

The project has demonstrated that the BRE Environmental Assessment Method, Excellent rating can be achieved using off-site construction and within compressed time scales. The Authority has gained another significant asset with excellent environmental credentials.



## Ynyshir Community Primary School

### Project description

The first ever primary school in Wales to receive a BREEAM 'Excellent' rating, the new Ynyshir Community Primary School scheme involved the amalgamation of the existing Junior and Infant Schools to form one new School, in Ynyshir, Porth.

With a gross floorspace of 2,127 sq m, it was constructed alongside the site of the former Junior School, and was delivered to achieve RCT's aim of creating an 'all through' Primary School, replacing two ageing buildings with a brand new, sustainably designed construction, having modern, state-of-the-art facilities, conducive to the provision of education in the 21st Century.

The £5m project is part of the Council's Capital Programme and is partially funded by the Welsh Assembly Government's 'School Building Improvement Grant'. Under a JCT 05 with Quantities (traditional contract), on-site works began in September 2008 and the new School building was completed in Autumn 2009, with interior fit-out completed by February 2010.

To date, the project has been awarded a 2010 'Building Control Quality Award' by Rhondda Cynon Taf Council in the LABC Awards, and has been short listed in the 'Sustainability' and 'Regeneration' categories for the 'RICS Wales Awards' 2010, short listed in the 'Low/Zero Carbon Award' category for the Constructing Excellence Wales Awards 2010, as well as being praised by staff and pupils.



### Design - Sustainability

A strong focus was placed on sustainable, as well as aesthetic and ergonomic design, and to delivering a BREEAM 'excellent' rated scheme.

#### Key features of the new building include:

A rainwater harvesting system, Green Guide A-rated materials, Solar thermal system, FSC certified timber (or similar certification), no refrigerants, Biomass heating system, sophisticated lighting control system, insulation materials with zero ozone depleting potential (ODP) and global potential (GWP) of less than 5.

The building itself also acts as an educational tool to teach pupils about the environment via the inclusion of an 'Eco-lab'; a demonstration display which is linked to solar panels and a small wind turbine located on the external teaching area at first floor level. This facility offers pupils direct interaction with the sustainable technologies and creates the opportunity to study environmental impacts and gain insight into

<i>Name of client</i>	<b>Rhondda Cynon Taf County Borough Council</b>
<i>Date of practical completion</i>	<b>October 2009</b>
<i>Contract value</i>	<b>£5 million</b>
<i>Project Manager</i>	<b>MJB Associates</b>
<i>Architect</i>	<b>Boyes Rees Architects</b>
<i>Quantity Surveyor</i>	<b>MJB Associates</b>
<i>Mechanical Engineer</i>	<b>Atkins Design &amp; Engineering</b>
<i>Electrical Engineer</i>	<b>DRAC Consulting</b>
<i>Structural Engineer:</i>	<b>WYG Engineering</b>
<i>Clerk of Works</i>	<b>Rhondda Cynon Taf County Borough Council</b>
<i>Planning Supervisor</i>	<b>Faithful &amp; Gould</b>
<i>Main Contractor</i>	<b>Willmott Dixon</b>



how these technologies can be used to reduce building energy consumption.

On completion of the main School building, staff and Junior pupils were able to occupy the School from November 2009, with the Infant classes moving in mid-April 2010. As such, output measurements are now in the initial stage of monitoring, but with sustainable design features included, carbon reduction will be achievable through numerous energy saving efforts and are predicted as follows.

- Predicted electricity consumption: 24 kWh/m<sup>3</sup>;
- Predicted fossil fuel consumption: 57 kWh/m<sup>3</sup>/annum (including catering);
- Predicted renewable energy generation: 106 kWh/m<sup>3</sup>/annum;
- Predicted water use - m<sup>3</sup>/pupil/year: 3.45m<sup>3</sup>/pupil/year;
- Predicted water use to be provided by rainwater or grey water: 60%

#### Design - Inclusiveness

The building itself is responsive not only to the physical site, but also to the needs of all users; staff, pupils and the local community who were consulted and considered throughout the design (and construction) process. It was identified during the initial project phases that the school needed to be accessible to the local community (groups of all ages, gender and physical abilities) for various uses in shared / multi-use spaces. (Following pre-design consultation with local groups, community facilities have been incorporated in the design; an area of 13% of school grounds will be used by the community, and an area of 17% of school buildings will be used by the community.)

The community rooms are located at either end of the school to allow greater flexibility of use and to promote links with the nursery facility. The arrangement of the accommodation allows the main school to be closed off while the community facilities

are in use, especially out of school hours.

The new building offers a number of flexible spaces that have been designed with due consideration given to size, location, etc, in order to provide community rooms that cater to the needs of the individuals within the local community. Glazed spaces at the rear of the building have been incorporated for flexible use (teaching, community use, etc) and a roof terrace provides alternative outdoor teaching and learning space.

Helping to ensure everyone can use the spaces with as much ease as possible a 'Link Bridge' has been built to the rear of the building offering a link to the playground on the upper plateau. Design of the building also incorporates a 'linear' arrangement of the classrooms in order to make navigation easy for all users.

#### Construction

Main contractor, Willmott Dixon Construction, is an associate member of the Considerate Contractors Scheme. All sites registered with the Scheme are monitored by an experienced industry professional to assess performance against the eight point 'Code of Considerate Practice' which includes the categories Considerate, Environment, Cleanliness, Good Neighbour, Respectful, Safe, Responsible and Accountable.

During the construction phase, Junior School pupils had access to a safe 'viewing platform' constructed by the Contractor, allowing them to observe the site at work during every playtime and also, when appropriate, during lessons. An example of this was a Design Technology project on the subject of 'gears and pulleys' where pupils were able to look at machinery in use on the site.

The design and construction team also held presentations at school assemblies to teach the pupils about dangers of construction sites and the contractor distributed monthly newsletters to the local community with construction updates.



## The Vale of Glamorgan - Making Leisure Accessible

### Project description

The Vale of Glamorgan's Leisure Centres were constructed over twenty years ago and were of a similar design and with similar access problems. The Council aware of its duties under its Single Equality Scheme looked to upgrade the Facilities to ensure that they would be available to all.

Audits were undertaken of the Buildings to establish the issues and schemes for inclusive environments were prepared.

As usual is with schemes of this nature within existing structures there's never enough space and decisions had to be made as to the best use of space and then adapt to suit the facilities. The works were tendered and the successful contractor (A & N Lewis) was appointed in 26th July 2009 and site commencement was in August 2009. The contract contained works to the four Leisure Centres at Barry, Cowbridge, Llantwit Major and Penarth. Study had shown that the



Leisure Centres were amongst those buildings with the highest visitor numbers.

The Project consisted of identifying the access issues and resolving them, this was achieved in numerous ways, from simple solutions such as remarking carparking spaces to the inclusion by an internal redesign the installation of specialised equipment such as hoists, height adjustable changing beds to create Changing Places Facilities. The Vale of Glamorgan now has changing places facilities at each end of its geographical area and provides two of only eight such facilities in Wales. The Council's firm intent was to encourage the use of its Leisure Centres by People with disabilities and to remove any physical exclusion.



The Council has a duty under its Single Equality Scheme to not only have a Policy on Disability and access but to be seen and be measurable on its commitment to this duty!

<i>Name of client</i>	<b>Vale of Glamorgan Council</b>
<i>Contract value</i>	<b>£600k</b>
<i>Design Team Leader</i>	<b>Paul V Scourfield, Vale of Glamorgan Council, Property Section</b>
<i>Quantity Surveyor</i>	<b>Dafydd Brown, Vale of Glamorgan Council, Property Section</b>
<i>Mechanical Engineer</i>	<b>Brian Thain, Vale of Glamorgan Council, Property Section</b>
<i>Electrical Engineer</i>	<b>Mike Davies, Vale of Glamorgan Council, Property Section</b>
<i>Structural Engineer</i>	<b>Gareth Bissett, Vale of Glamorgan Council, Property</b>
<i>Planning Supervisor</i>	<b>Paul V Scourfield, Vale of Glamorgan Council, Property</b>
<i>Access Officer</i>	<b>Paul V Scourfield, Vale of Glamorgan Council, Property Section</b>
<i>Main Contractor</i>	<b>A&amp;N Lewis, Unit 8, Ely Bridge Industrial Estate, Wroughton Place, Ely, Cardiff, CF5 4AQ</b>

## Wrexham Library Refurbishment



### Project description

Wrexham Library is the largest public library in Wales north of Swansea and thus it commands a significant position in the public library network in Wales. The Library enjoys an excellent location, being convenient to the retail centre and being close to other leisure amenities, as well as having public parking facilities (immediately behind the building) and a bus station nearby (across the road). It is also well-used, with some 7,500 visitors each week - extended opening hours (57 hours per week), improvements in the quantity and quality of stock and the provision of ICT facilities have had a significant effect on use. However, high levels of use also increase the wear and tear on the building and its facilities and the need for refurbishment is now apparent.

Being the only large library in the authority, Wrexham Library has a crucial role to play in the development of services and their use. It is undoubtedly the authority's flagship service point, and achieving more of the Welsh Public Library Standards is likely to be largely dependent on the service performances achieved by this library. Indeed, it is argued that Wrexham Library is the only library within the Authority that has the potential to have a significant impact on performance indicators.

Wrexham Library was built in the early 1970s and was showing obvious signs of its age. Recent work to modernize the building has included the installation of new boilers and air handling units.

<i>Name of client</i>	<b>Alan Watkin - Chief Leisure, Libraries and Culture Officer – W.C.B.C.</b>
<i>Date of practical completion</i>	<b>5th February 2010</b>
<i>Contract value</i>	<b>£400,000</b>
<i>Project Manager</i>	<b>Mr Mark Fidler W.C.B.C.</b>
<i>Designer</i>	<b>Mr Mark Fidler W.C.B.C.</b>
<i>Quantity Surveyor</i>	<b>Mr Jeremy Roberts W.C.B.C.</b>
<i>Mechanical Engineer</i>	<b>N/A</b>
<i>Electrical Engineer</i>	<b>Graham Cowsill W.C.B.C.</b>
<i>Structural Engineer</i>	<b>Mrs Vanessa Owen W.C.B.C. &amp; ACP Engineering (Wrexham) Ltd</b>
<i>Clerk of Works</i>	<b>Mr Austin Nichols W.C.B.C.</b>
<i>Planning Supervisor</i>	<b>Mr Chris Roberts S.P.P. Consultants</b>
<i>Main Contractor</i>	<b>Maelor Construction Ltd</b>

However, there was an opportunity to submit an external bid for funding to CyMAL, a division of the Welsh Assembly Government, during 2008/09 for work to be carried out during 2009/10 with a view to modernising the library.

The anticipated budget available from CyMAL was £300,000 with a requirement for the local authority to provide 10% match funding. Potentially, the match funding could include other maintenance work or the purchase of additional equipment (such as computers). The sum of £500 resides in the Library Charity and will contribute towards public art for the project.

The project will seek to brighten, modernise and improve public space within the building and generally present a more vibrant and attractive face to the community.

The foyer will be improved by the installation of attractive glass panels and sliding glass doors, thus providing an improved entrance area within the foyer as well as reducing heat loss and minimising cold draughts. It will also enable us to locate new security aisles in this area. The 'transition zone' in the foyer will be upgraded by the installation of large format images on reading themes.

A new central issue desk with a good overview over the whole area will be installed. It is envisaged that this desk will be smaller than the present one and will provide improved staff-customer interaction. Adjacent to the desk will be two self-issue terminals, centrally located between the desk and transition zone and immediately visible to customers on their arrival. Transactions on these terminals will free staff time to interact with customers, with the consequential improvement to the 'visitor experience'. This will also assist with improved customer assistance and stock promotion.

The stock security system will reduce theft and, through its integration with the self-issue terminals, will decrease transaction time and further enhance the customer's experience. Locating the aisles within the proximity of the new sliding doors in the entrance will enable customers to choose their own entrance/exit into the library (currently restricted to entry on right side only, contrary to the standard keep left mentality!). Its location by the new glass doors will also enable us to buy one pair of aisles rather than the two pairs that would be required under the present lay-out. Installation of a CCTV system will provide customers and staff with a safer environment.

Other improvements such as shelving, signage and furniture, aim to improve and modernise the general ambience of the library. A programme of staff training would be implemented.

**The intention is to:**

- v. create additional usable space for the public
- vi. introduce new services such as Wi-Fi and other technologies
- vii. create a strong visual impact
- viii. consider improved work areas

Improvements/modernisation needs to include the following:

**Entrance:** Improve the entrance to the library to provide a modern, welcoming environment for library customers. This could involve improving the current entrance, which is shared with the Arts Centre or the designation of a new entry point. The new/revamped library entrance should enable people to immediately view the resources and services on offer; initial visual impact is therefore highly desirable. One suggestion for the present entrance is to include re-siting of stairs and removal of the library gates together with the installation of large format images on the walls. The design study may also consider an alternative entrance.

**Staircase:** Provide a new feature staircase.

**BFI Mediatheque:** Provide Wales with its first Mediatheque facility.

**Extended floor area (i):** Create a new display area on the first floor to accommodate community arts display facility.

**Extended floor area (ii):** Create a space for lectures and talks, author visits and as a teaching and learning space (e.g. for ICT through the installation of Wi-Fi). This will include the re-location as a separate unit of Studybase from the ground floor with access to the training area possibly through concertina-type door.

**Lighting:** Improved lighting for all public areas

**Furniture:** New shelving, counters, promotional furniture on both floors will be required. It may be desirable to seek tenders from specialist Library furnishing companies for a complete package.

**Staff work areas:** the re-location of Studybase will potentially provide an opportunity to refurbish this room for staff use.



